



Sony Ericsson

Working Instructions

- mechanical -



Sony Ericsson Live with Walkman
WT19a, WT19i



CONTENTS

1	Exterior Views.....	4
1.1	WT19a, WT19i.....	4
2	Tools	5
3	Disassembly.....	6
3.1	Battery Cover Assy	6
3.2	Battery.....	7
3.3	Rear Cover	7
3.4	Main PBA	9
3.5	Front Cover Assy	12
3.6	Carrier Frame Assy	14
3.7	Display	14
4	Replacement	15
4.1	Audio Jack and Adhesive Audio Jack.....	15
4.2	Adhesive Camera Window.....	18
4.3	Adhesive LCD FPC.....	20
4.4	Adhesive Touch Panel	22
4.5	Battery Cover.....	24
4.6	Camera.....	25
4.7	Camera Ring.....	27
4.8	Carrier Frame Assy	28
4.9	Co-Brand.....	29
4.10	Core Unit Label.....	31
4.11	Cushion 0.0 mm Rubber Camera	32
4.12	Cushion PBA	33
4.13	Cushion PBA B.....	34
4.14	Display	35
4.15	Doom Sheet	37
4.16	Ear Speaker and Gasket Receiver.....	38
4.17	Front Cover.....	40
4.18	Gasket Camera	41
4.19	Icon Walkman Logo	43
4.20	Key Home	44
4.21	Key Side.....	45
4.22	Label For RF Connector	47
4.23	Loudspeaker and Gasket Speaker	48
4.23.1	Upper Loudspeaker.....	48
4.23.2	Lower Loudspeaker.....	50
4.24	Net Microphone	52
4.25	Net Receiver	53



4.26	Rear Cover	54
4.27	Shield Can Lid DBB.....	55
4.28	Shield Can Lid PMU	56
4.29	Shield Can Lid RF	57
4.30	Water Indicator	58
4.31	Window Camera	59
4.32	Window Flash LED	60
4.33	Board Swap - Replacement	61
4.34	Board Swap – Change Label	61
5	Reassembly.....	62
5.1	Display	62
5.2	Carrier Frame Assy	62
5.3	Front Cover	63
5.4	Main PBA	64
5.5	Rear Cover	67
5.6	Battery.....	69
5.7	Battery Cover Assy	70
6	Country of Origin Barcodes for Brazil/VIVO Labels.....	71
7	Revision History	72

**For general information about mechanical repair related issues, refer to
1220-1333: Generic Repair Manual - mechanical**



1 Exterior Views

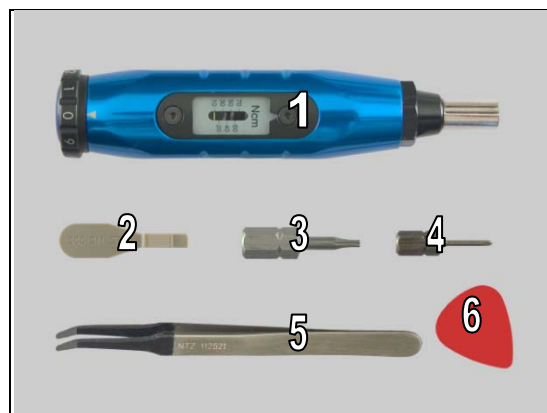
1.1 WT19a, WT19i



2 Tools

SPECIAL TOOLS

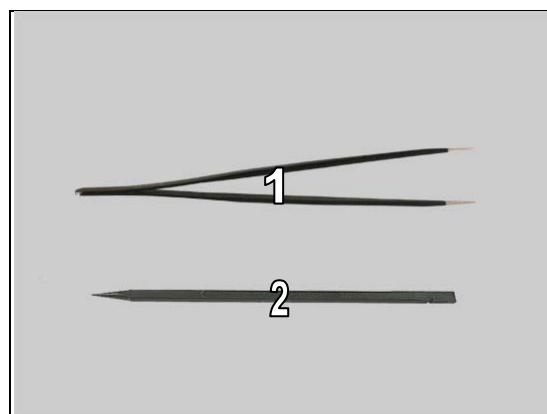
1. Torque Screwdriver
2. Front Opening Tool
3. Bits (T6)
4. Bits (JCIS No 0)
5. Flex Film Assembly Tool
6. Guitar Pick



For part no's on the tools above, refer to the 'Tools Catalogue/Matrix'!

STANDARD TOOLS

1. Tweezers
2. Nylon Pointer

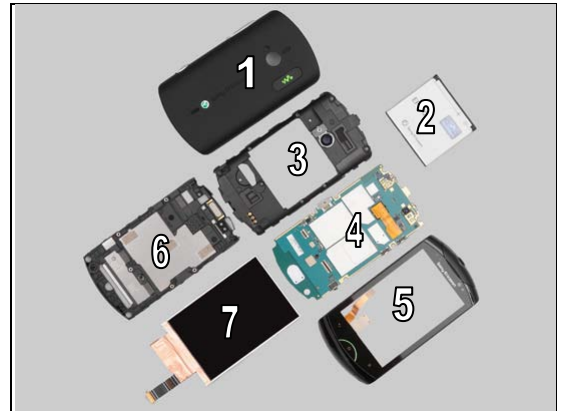




3 Disassembly

The disassembly is done in the following order:

1. Battery Cover Assy
2. Battery
3. Rear Cover
4. Main PBA
5. Front Cover Assy
6. Carrier Frame Assy
7. Display



3.1 Battery Cover Assy

There are nine hooks to secure the Battery Cover Assy.



Insert finger into the slot and pull upwards to release this side of Battery Cover Assy.



Turn the Battery Cover Assy over to remove it.



Disassembly

3.2 Battery

Lift up the bottom of the battery to release it.



Remove the Battery.



3.3 Rear Cover

Remove the four screws Other Len 4.5 Diam 1.7 by using a screwdriver with Bits (T6).



Remove the five screws M1.4x3.5 by using a screwdriver with Bits (JCIS No 0).

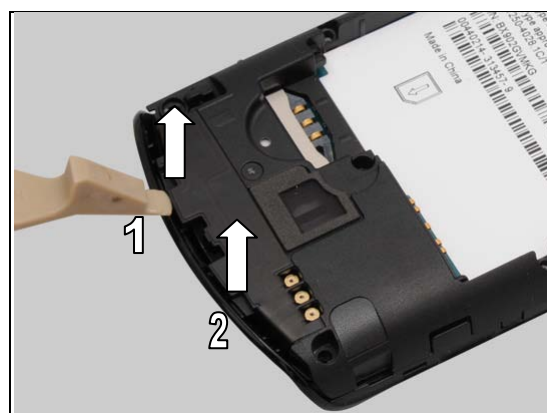


Disassembly

There are seven hooks secure the Rear Cover.



Release the two hooks from the bottom side by using a Front Opening Tool.



Release the hook from this side.

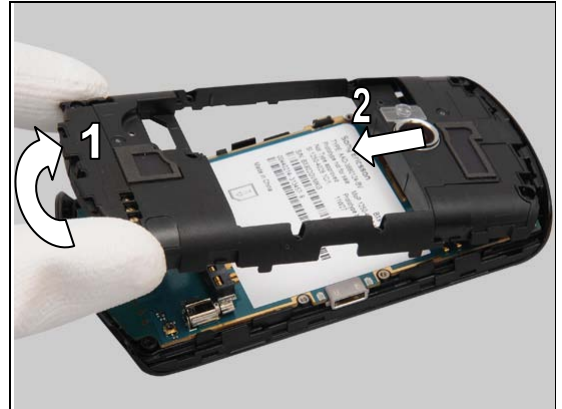


Release the two hooks from the opposite side.



Disassembly

Lift up and pull to release the hooks on the top.



Separate the Rear Cover from the Unit.

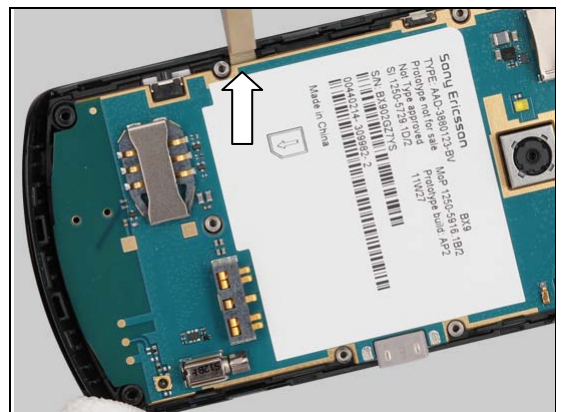


3.4 Main PBA

There are two hooks secure the Main PBA.



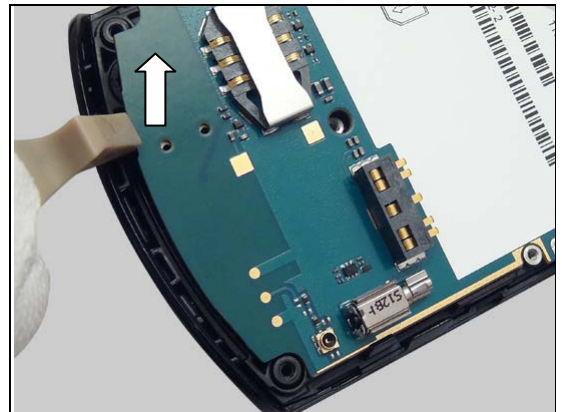
Insert a Front Opening Tool to release the hook from this side.



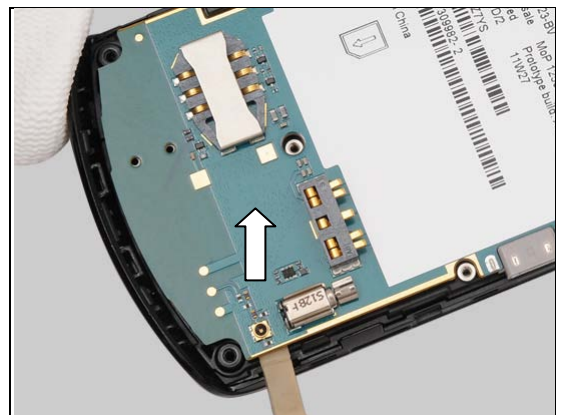
Disassembly

Insert a Front Opening Tool to release the bottom side.

Take care of the Microphone on the back of the PBA!



Do the same to release the hook of this side.



Gently lift up the main PBA approximately 15° from the bottom side.

Be careful of the two FPCs on the back of the Main PBA!



Pull the Main PBA to release the top side from the two light guide pins.

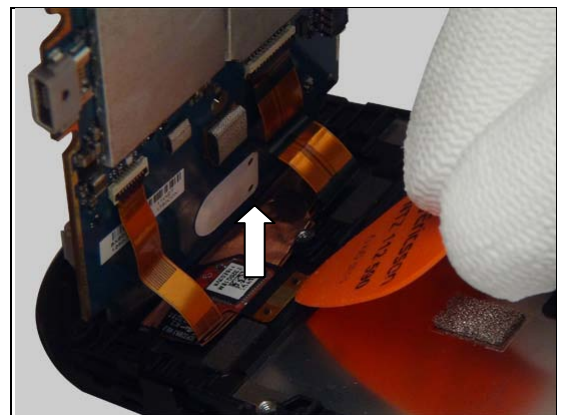


Disassembly

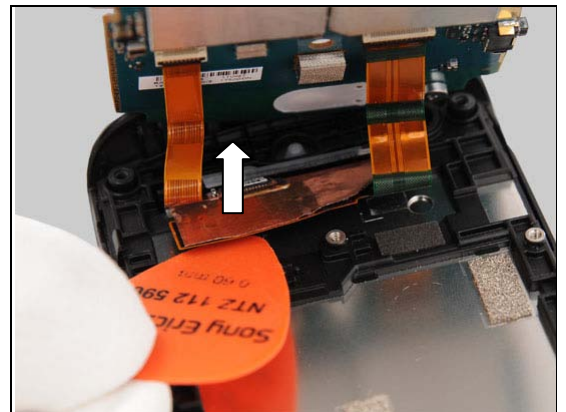
Gently lift up the top side of Main PBA at approximately 30°.



Insert the Guitar Pick underneath the Touch Panel FPC as shown and detach to release it.

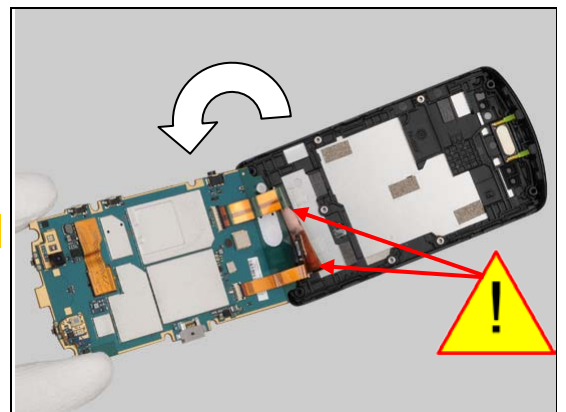


Insert the Guitar Pick underneath the LCD FPC as shown and slide along it to detach and release the FPC.



Turn the Main PBA over gently.

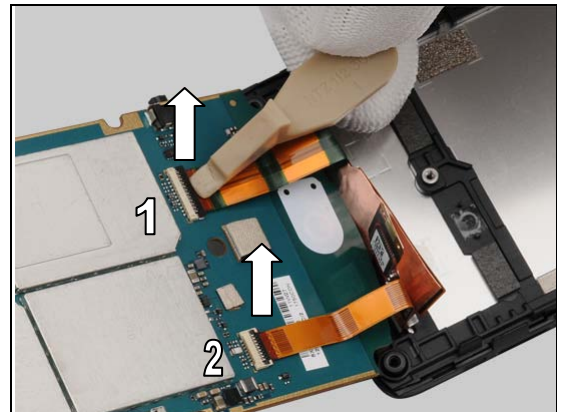
Do not draw these two FPCs too much!



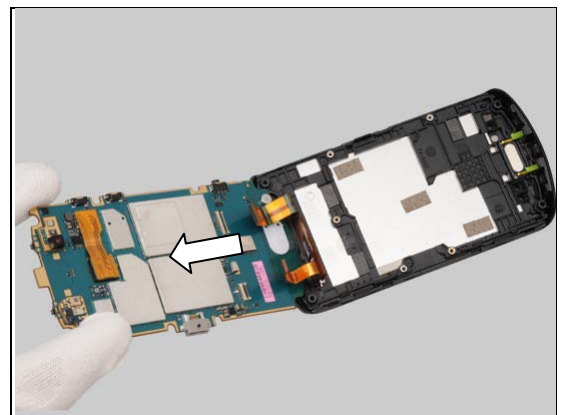


Disassembly

Unsnap the two ZIF connectors by using a Front Opening Tool.

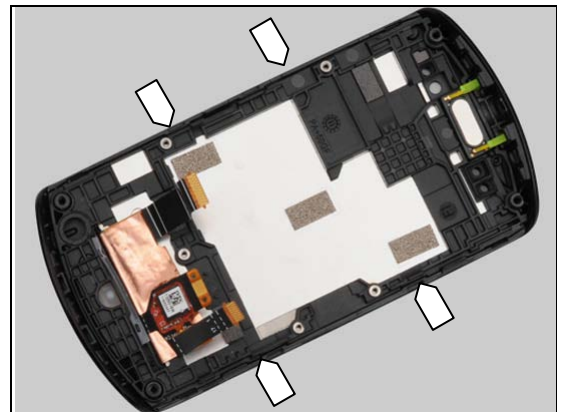


Carefully separate the Main PBA from the front unit.



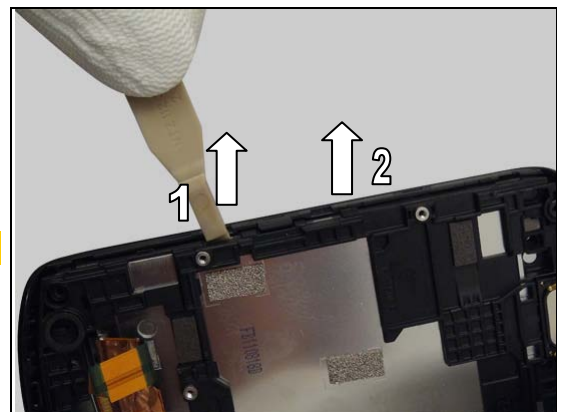
3.5 Front Cover Assy

There are four hooks to secure the Carrier Frame Assy.



Release the hooks from this side by using a Front Opening Tool.

Do not damage the Display!

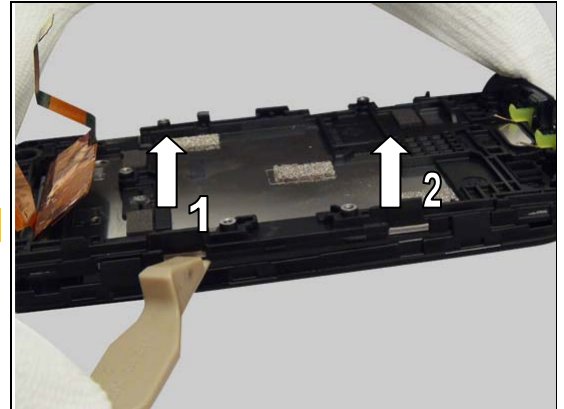




Disassembly

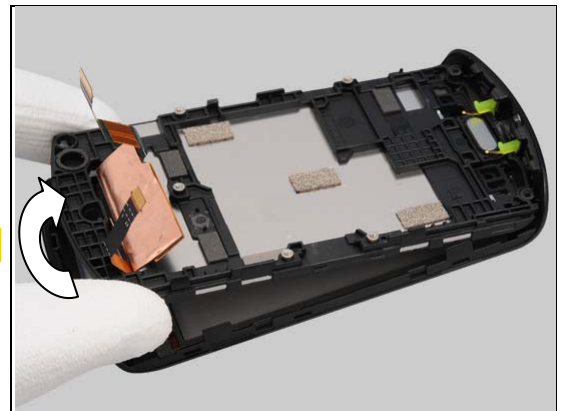
Do the same for the opposite side.

Do not damage the Display!



Gently lift up the bottom side of Carrier Frame Assy approximately 30°.

Be careful of FPCs!



Gently pull to release the top side of Carrier Frame Assy.



Separate the Front Cover from the Unit.

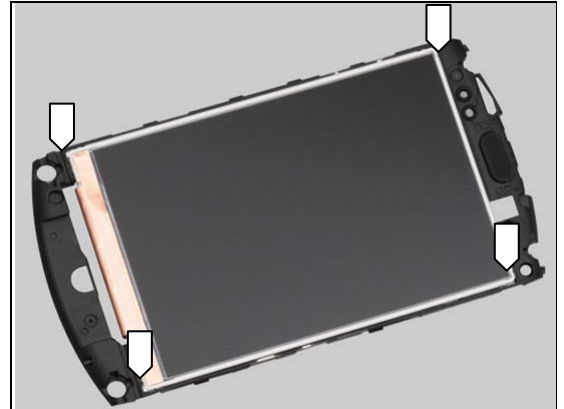




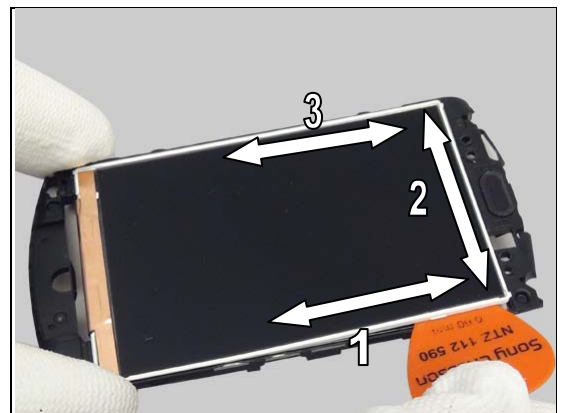
Disassembly

3.6 Carrier Frame Assy

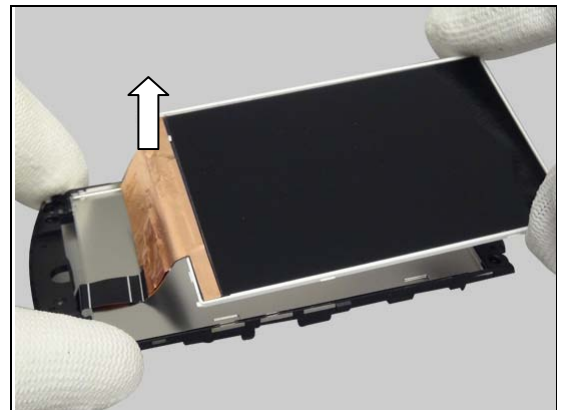
There are four hooks to secure the Display.



Insert the Guitar Pick to release the three sides following the order as shown.



Pull to release the bottom hooks and remove the Display.



3.7 Display

Separate the Display and the Carrier Frame Assy.





4 Replacement

4.1 Audio Jack and Adhesive Audio Jack

Follow the 3.1 – 3.3 Disassembly instructions!

Carry out the Removal as described below.

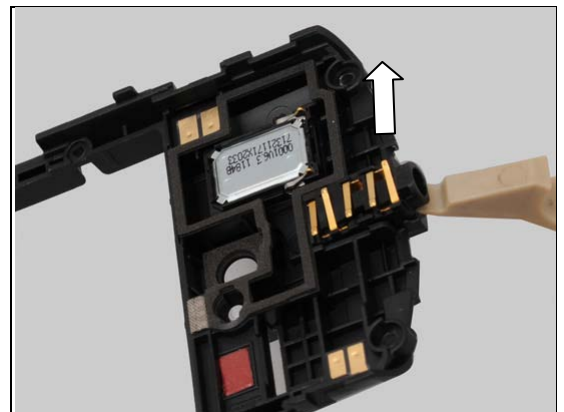
Prepare a new Audio Jack and a new Adhesive Audio Jack.

Carry out the Installation as described below.

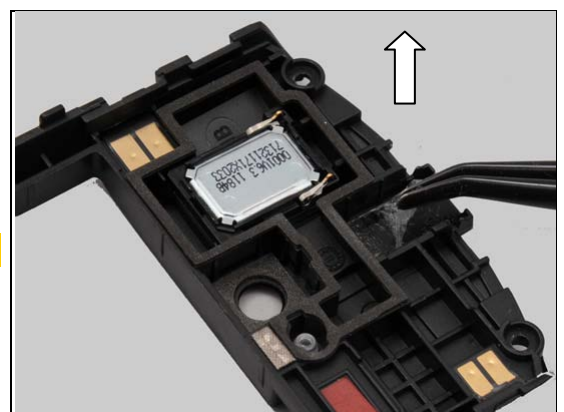
Follow the 5.5 – 5.7 Reassembly instructions!

REMOVAL

Insert the Front Opening Tool underneath and pull upwards to release the Audio Jack as shown.



Remove the Audio Jack by using a Flex Film Assembly Tool.



Peel off the Adhesive Audio Jack by using a Flex Film Assembly Tool.

Make sure all remains have been removed!

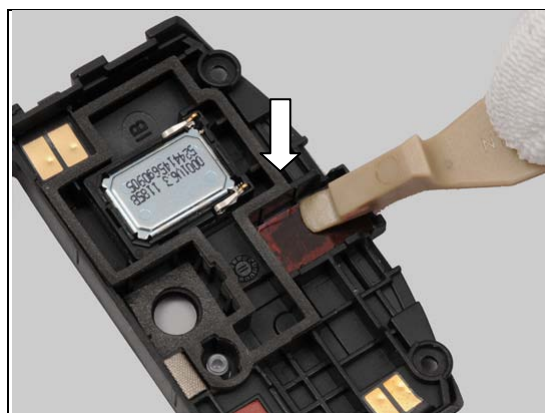
Replacement: Audio Jack and Adhesive Audio Jack

INSTALLATION

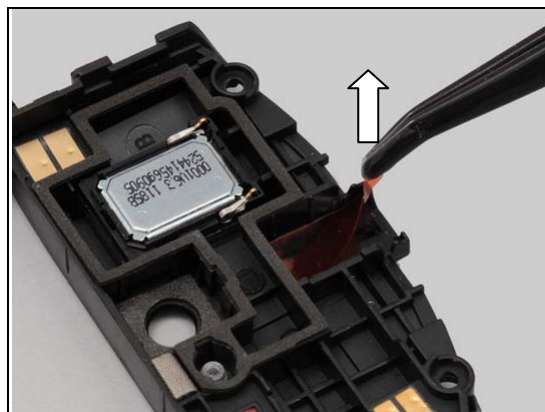
Attach a new Adhesive Audio Jack into the cavity.



Press to secure its attachment.



Peel off the protective film.



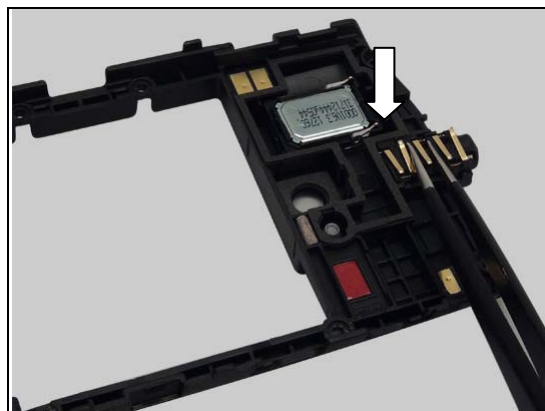
Place the Audio Jack in the cavity.



Replacement: Audio Jack and Adhesive Audio Jack

Press to secure its attachment.

Do not touch the contact pins!



Replacement

4.2 Adhesive Camera Window

Follow the 3.1 – 3.3 Disassembly instructions!
Follow the 4.32, 4.31, 4.7, Removal instructions!
 Carry out the Removal as described below.
 Prepare a new Adhesive Camera Window.
 Carry out the Installation as described below.
Follow the 4.7, 4.31, 4.32, Installation instructions!
Follow the 5.5 – 5.7 Reassembly instructions!

REMOVAL

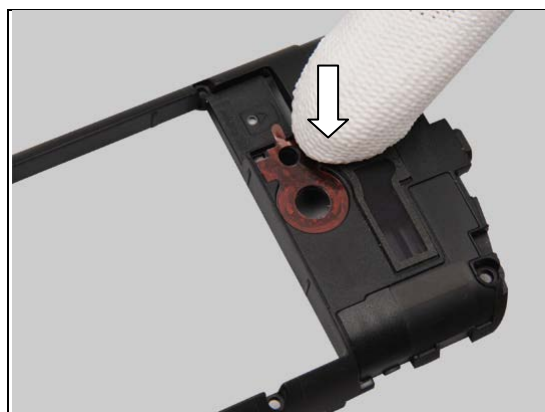
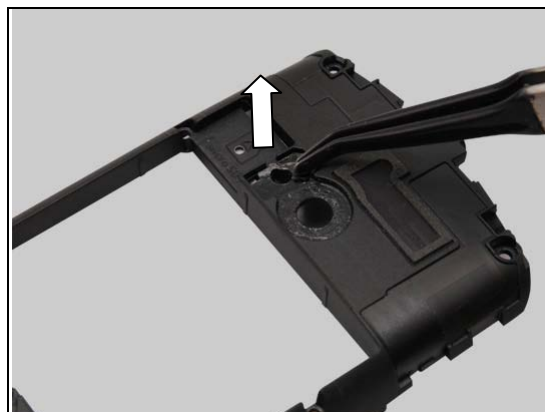
Detach to remove the Adhesive Camera Window.

Make sure all remains have been removed!

INSTALLATION

Attach a new Adhesive Camera Window aligning the frame as shown.

Press to secure its attachment.



Replacement: Adhesive Camera Window

Peel off the protective film.





Replacement

4.3 Adhesive LCD FPC

There are two Adhesive LCD FPCs.

Do the same to the other if need!

Follow the 3.1 – 3.4 Disassembly instructions!

Carry out the Removal as described below.

Prepare a new Adhesive LCD FPC.

Carry out the Installation as described below.

Follow the 5.4 – 5.7 Reassembly instructions!

REMOVAL

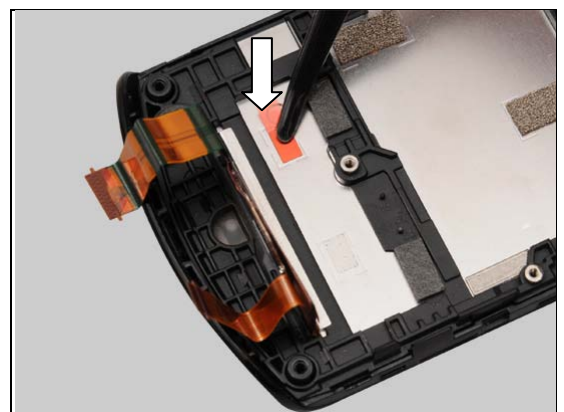
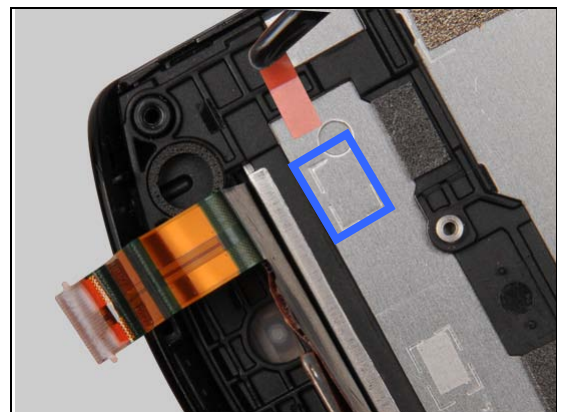
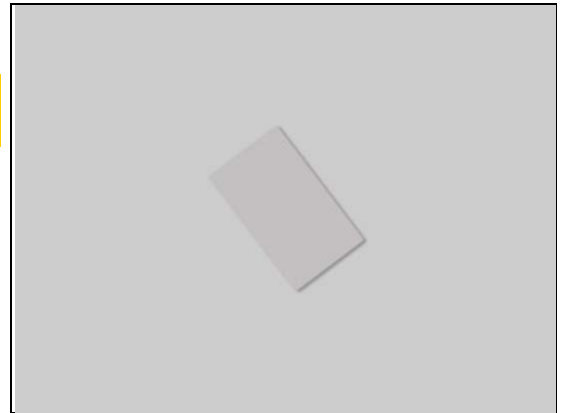
Detach to remove the Adhesive LCD FPC.

Make sure all remains have been removed!

INSTALLATION

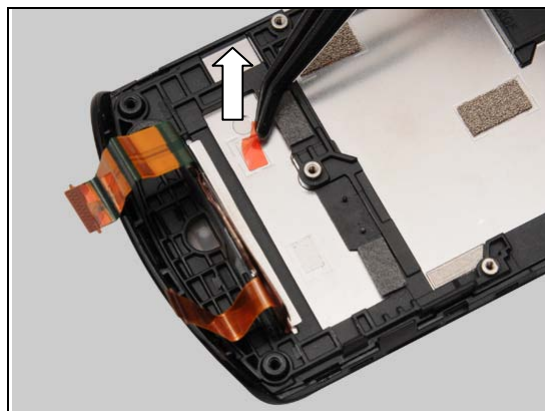
Place a new Adhesive LCD FPC aligning to the guiding line as shown.

Press to secure its attachment.



Replacement: Adhesive LCD FPC

Peel off the protective film.



Replacement

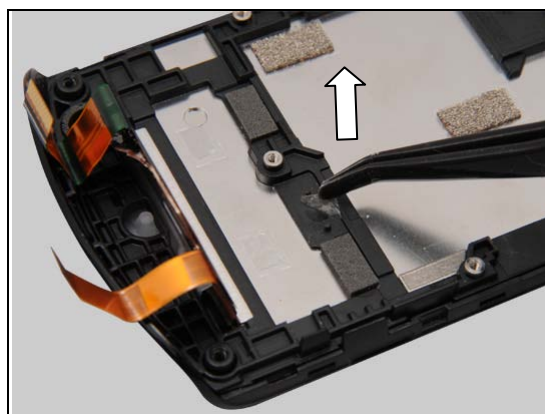
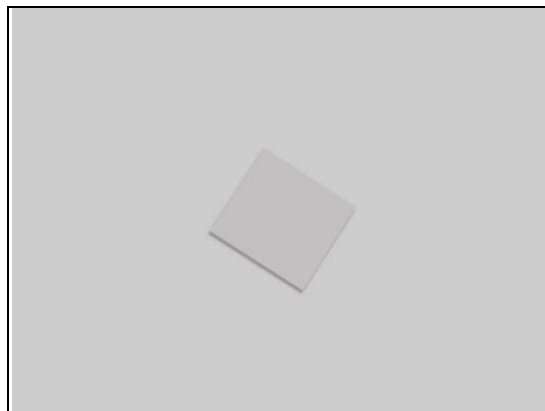
4.4 Adhesive Touch Panel

Follow the 3.1 – 3.4 Disassembly instructions!
 Carry out the Removal as described below.
 Prepare a new Adhesive Touch Panel.
 Carry out the Installation as described below.
Follow the 5.4 – 5.7 Reassembly instructions!

REMOVAL

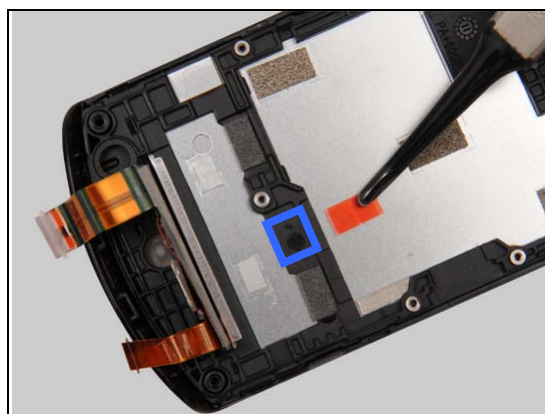
Detach to remove the Adhesive Touch Panel.

Make sure all remains have been removed!

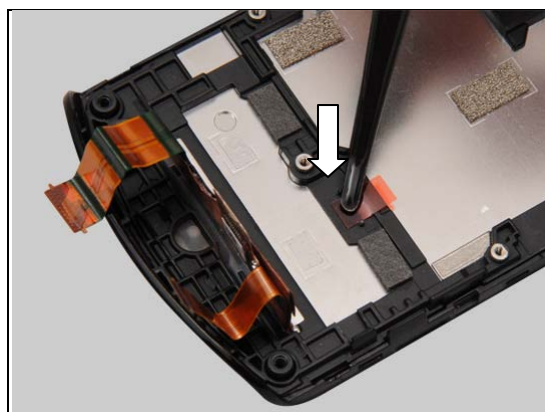


INSTALLATION

Place a new Adhesive Touch Panel aligning to the two guiding pins as shown.

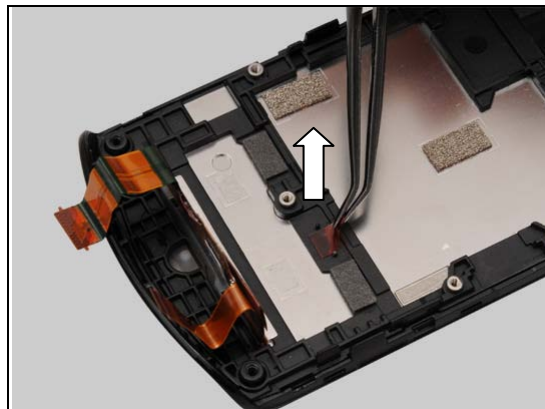


Press to secure its attachment.



Replacement: Adhesive Touch Panel

Peel off the protective film.



Replacement

4.5 Battery Cover

Follow the 3.1 Disassembly instructions!

Prepare a new Battery Cover.

Follow the 4.9 Installation instructions!

Follow the 5.7 Reassembly instructions!





Replacement

4.6 Camera

Follow the 3.1 – 3.4 Disassembly instructions!
Carry out the Removal as described below.
Prepare a new Camera.
Carry out the Installation as described below.
Follow the 5.4 – 5.7 Reassembly instructions!

REMOVAL

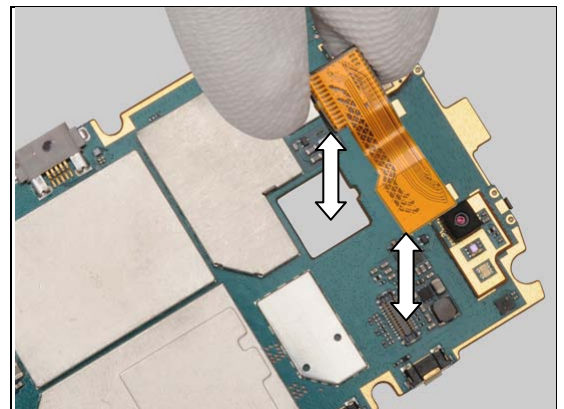
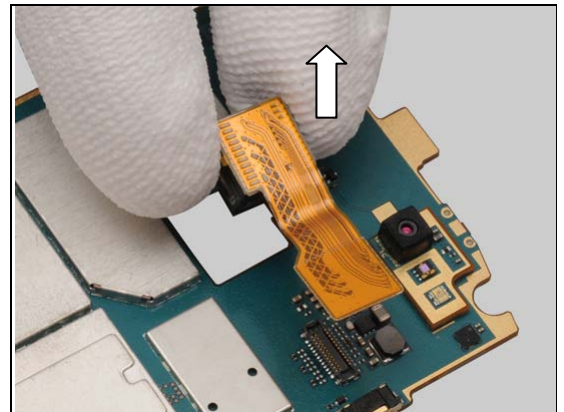
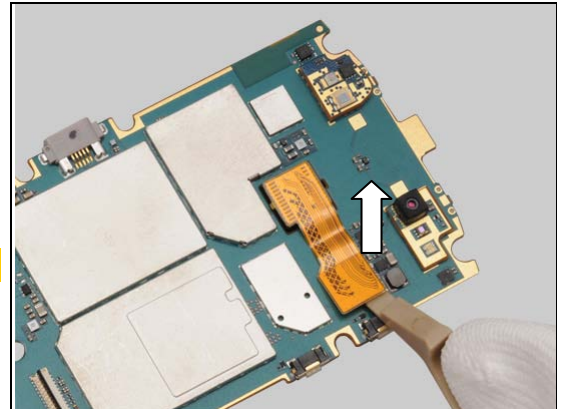
Unsnap the BtB connector by using a Front Opening Tool.

Do not damage the volume key!

Remove the Camera.

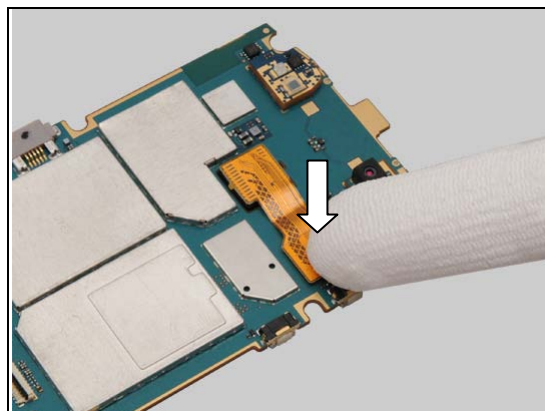
INSTALLATION

Place a new Camera in the slot with proper direction.



Replacement: Camera

Press to snap the BtB connector properly.





Replacement

4.7 Camera Ring

Follow the 3.1 – 3.3 Disassembly instructions!

Follow the 4.31 Removal instructions!

Carry out the Removal as described below.

Prepare a new Camera Ring.

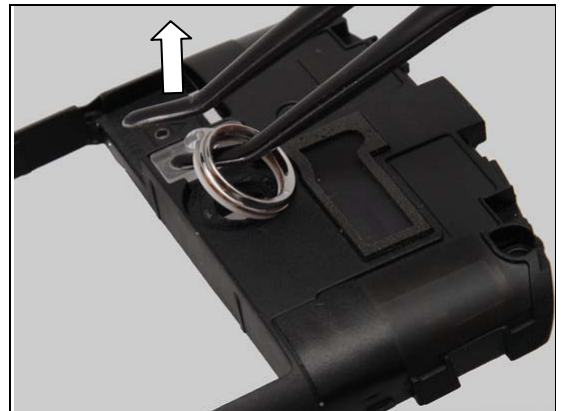
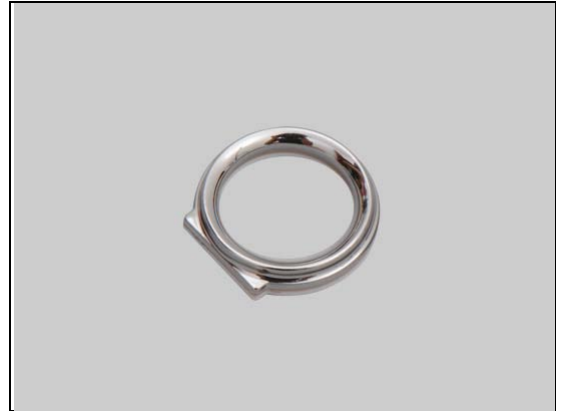
Carry out the Installation as described below.

Follow the 4.31 Installation instructions!

Follow the 5.5 – 5.7 Reassembly instructions!

REMOVAL

Remove the Camera Ring by using a Flex Film Assembly Tool.



INSTALLATION

Check the stickiness of the adhesive before installation!

Place a new Camera Ring in the cavity.



Press to secure its attachment.



Replacement

4.8 Carrier Frame Assy

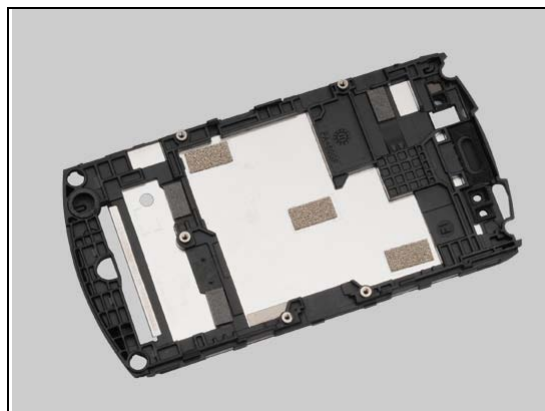
Follow the 3.1 – 3.6 Disassembly instructions!

Follow the 4.16 Removal instructions!

Prepare a new Carrier Frame Assy.

Follow the 4.16 Installation instructions!

Follow the 5.2 – 5.7 Reassembly instructions!





Replacement

4.9 Co-Brand

Follow the 3.1 – 3.2 Disassembly instructions!
Carry out the Removal as described below.
Prepare a new Co-Brand.
Carry out the Installation as described below.
Follow the 5.6 – 5.7 Installation instructions!

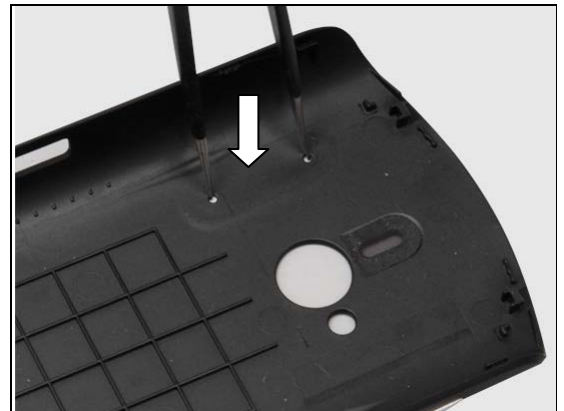
REMOVAL

Push against the Co-Brand from the back side holes by using a pair of Tweezers.

Remove it by using a Flex Film Assembly Tool.

INSTALLATION

Place a new Co-Brand in the correct position.



Replacement: Co-Brand

Press along to secure its attachment.



Replacement

4.10 Core Unit Label

Follow the 3.1 – 3.2 Disassembly instructions!
 Carry out the Removal as described below.
 Prepare a new Core Unit Label.
 Carry out the Installation as described below.
Follow the 5.6 – 5.7 Reassembly instructions!

REMOVAL

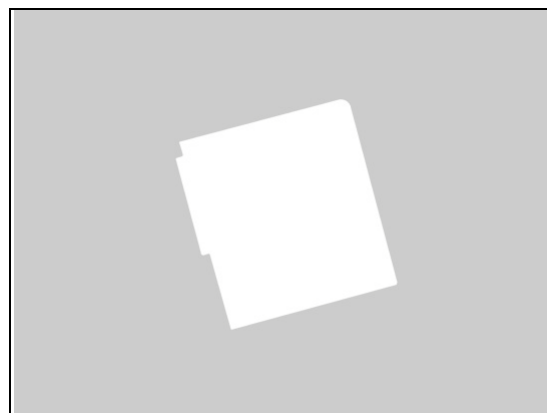
Read the old Label Mobile Phone and write the information into the 'LabelMake' program.
 Carefully remove the Label.

INSTALLATION

Check that the proper label format is loaded in the Zebra printer and write a new Label by using the 'LabelMake' software.

Press along the surface to make Label securely attached.

One label only is allowed!





Replacement

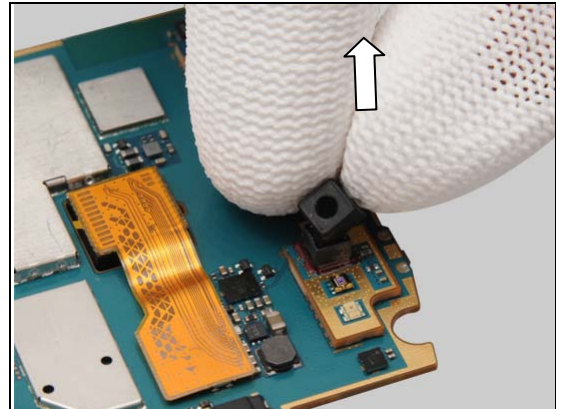
4.11 Cushion 0.0 mm Rubber Camera

Follow the 3.1 – 3.4 Disassembly instructions!
Carry out the Removal as described below.
Prepare a new Cushion 0.0 mm Rubber Camera.
Carry out the Installation as described below.
Follow the 5.4 – 5.7 Reassembly instructions!



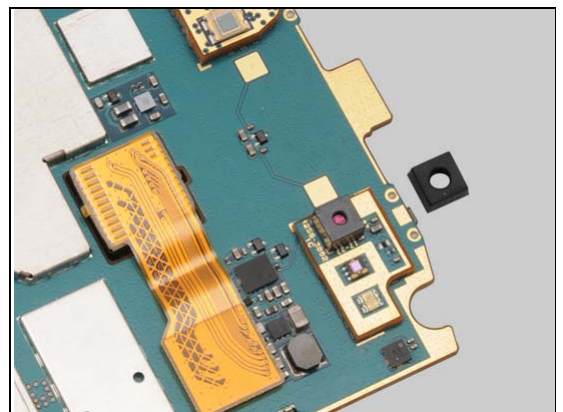
REMOVAL

Remove the Cushion 0.0 mm Rubber Camera.



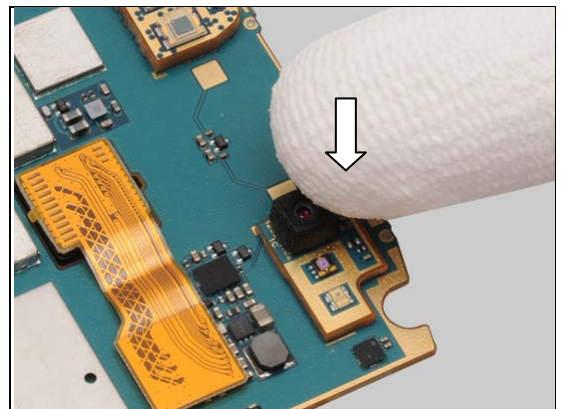
INSTALLATION

Place a new Cushion 0.0 mm Rubber Camera on the chat camera.



Press to secure its position.

Do not touch the chat camera lens!





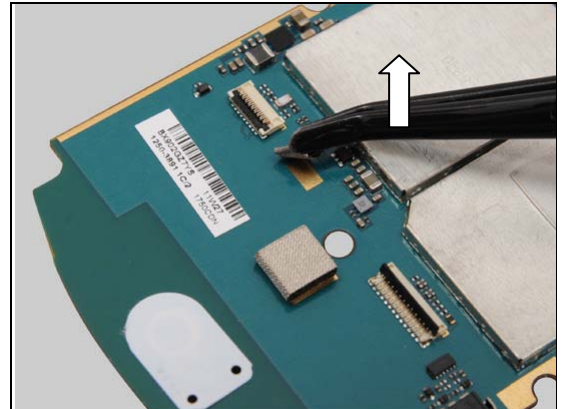
Replacement

4.12 Cushion PBA

Follow the 3.1 – 3.4 Disassembly instructions!
Carry out the Removal as described below.
Prepare a new Cushion PBA.
Carry out the Installation as described below.
Follow the 5.4 – 5.7 Reassembly instructions!

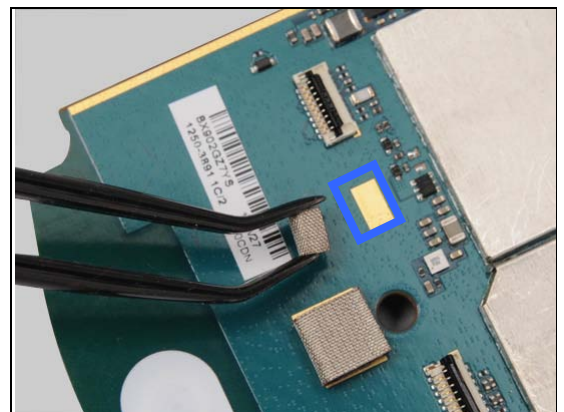
REMOVAL

Remove the Cushion PBA by using a Flex Film Assembly Tool.

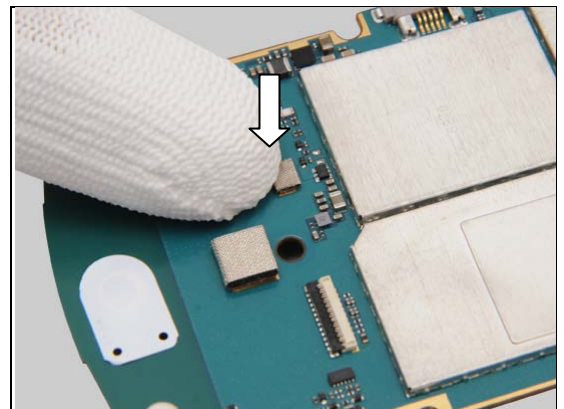


INSTALLATION

Place a new Cushion PBA in the golden area as shown.



Press to secure its position and attachment.





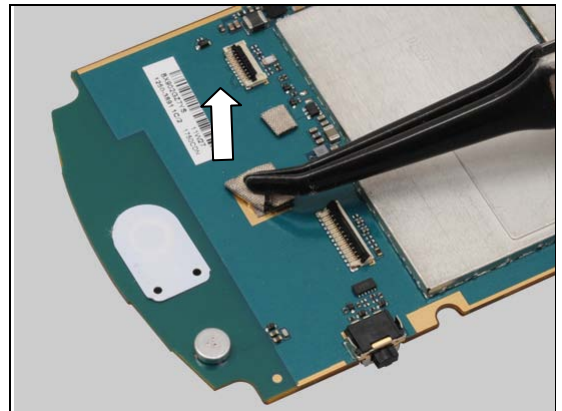
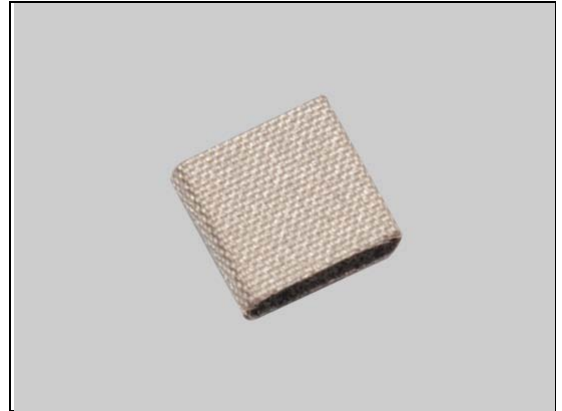
Replacement

4.13 Cushion PBA B

Follow the 3.1 – 3.4 Disassembly instructions!
Carry out the Removal as described below.
Prepare a new Cushion PBA B.
Carry out the Installation as described below.
Follow the 5.4 – 5.7 Reassembly instructions!

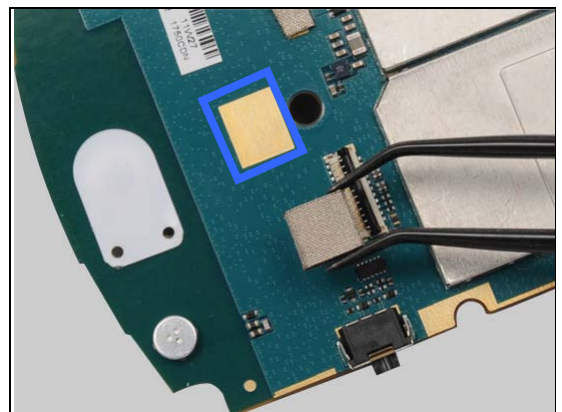
REMOVAL

Remove the Cushion PBA B by using a Flex Film Assembly Tool.

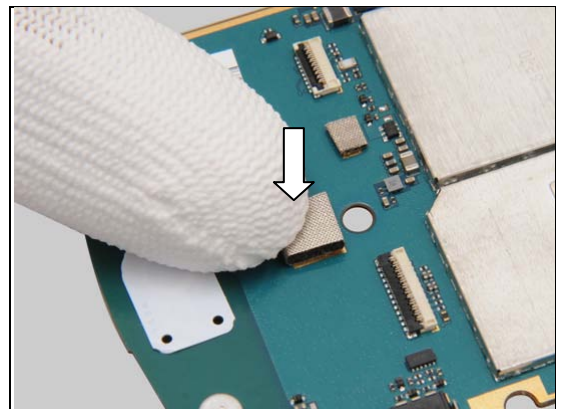


INSTALLATION

Place a new Cushion PBA B in the golden area as shown.



Press to secure its position and attachment.



Replacement

4.14 Display

Follow the 3.1 – 3.7 Disassembly instructions!

Prepare a new Display.

Carry out the Installation as described below.

Follow the 5.3 – 5.7 Reassembly instructions!

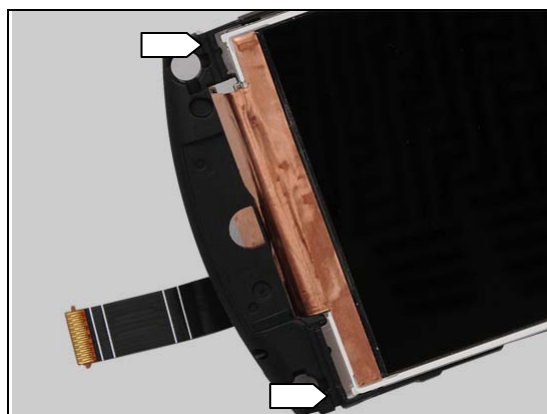
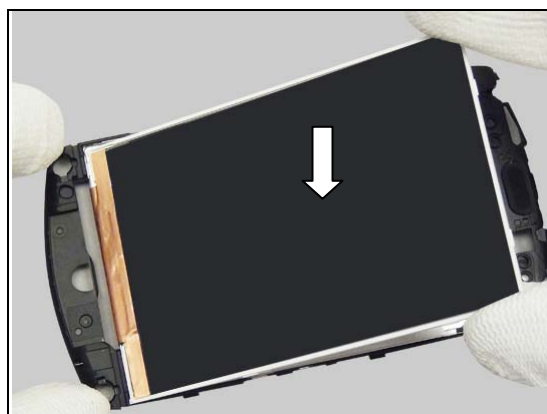
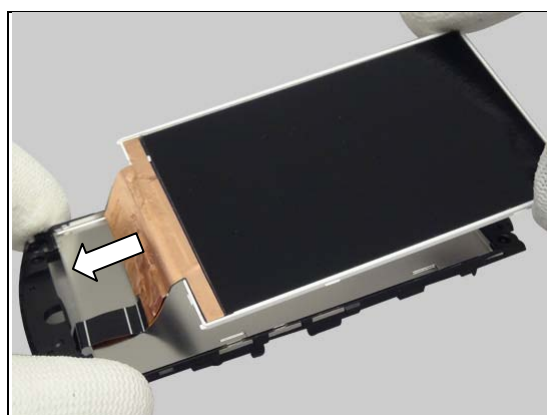
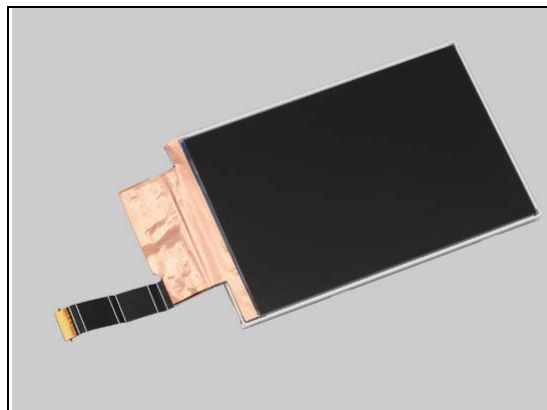
INSTALLATION

Gently insert the LCD FPC through the slot of the Carrier Frame Assy.

Do not touch the front of the Display!

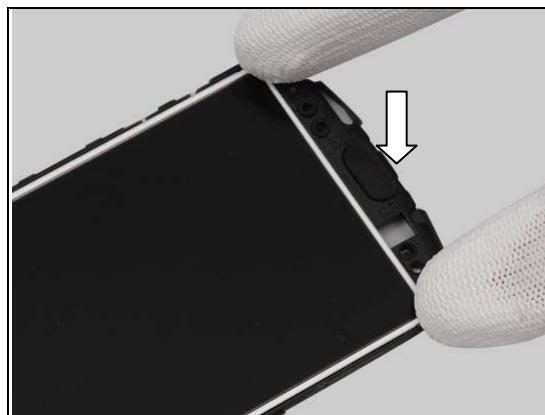
Place the display on the Carrier Frame Assy.

Insert the two hooks into the Carrier Frame Assy.

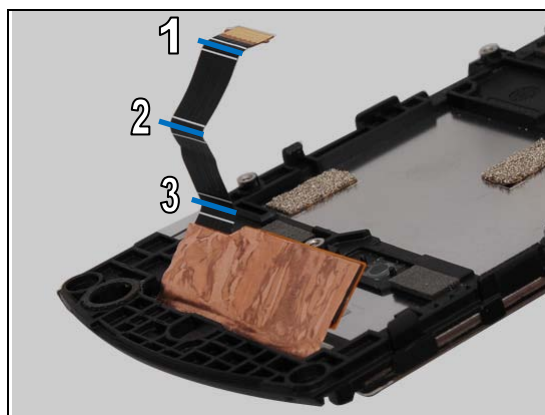


Replacement: Display

Press to snap the two hooks of the Display.



Pre-bend the LCD FPC by the guide line as shown.





Replacement

4.15 Doom Sheet

Follow the 3.1 – 3.4 Disassembly instructions!
Carry out the Removal as described below.
Prepare a new Doom Sheet.
Carry out the Installation as described below.
Follow the 5.4 – 5.7 Reassembly instructions!

REMOVAL

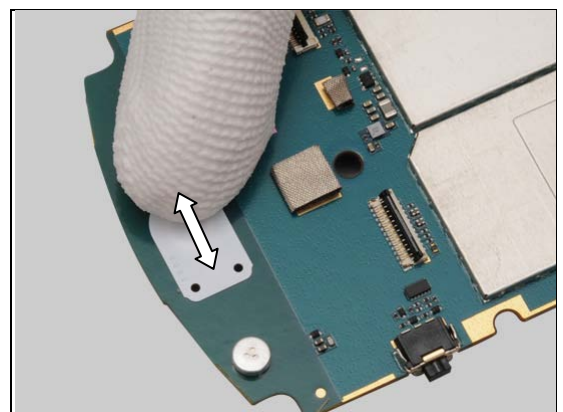
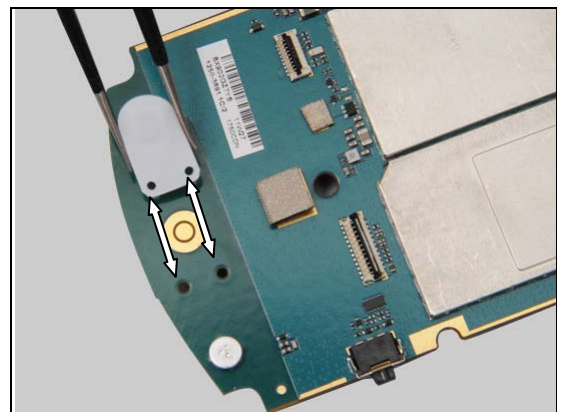
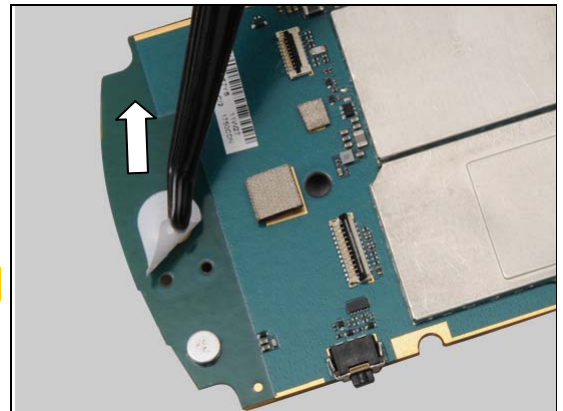
Detach to remove the Doom Sheet by using a Flex Film Assembly Tool.

Scrap! Not to be reused!

INSTALLATION

Place a new Doom Sheet aligning to the two guiding holes as shown.

Press along to secure its position and attachment.





Replacement

4.16 Ear Speaker and Gasket Receiver

Follow the 3.1 – 3.4 Disassembly instructions!

Carry out the Removal as described below.

Prepare a new Ear Speaker and a new Gasket Receiver.

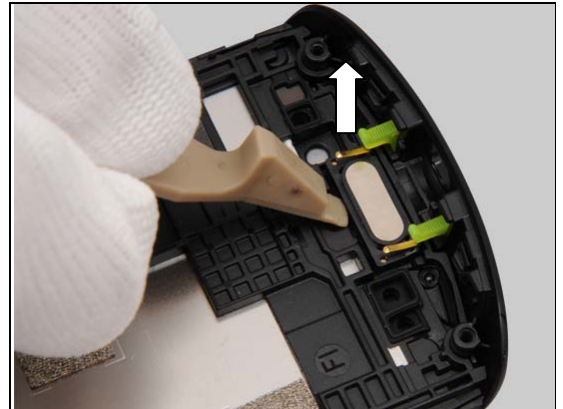
Carry out the Installation as described below.

Follow the 5.4 – 5.7 Reassembly instructions!



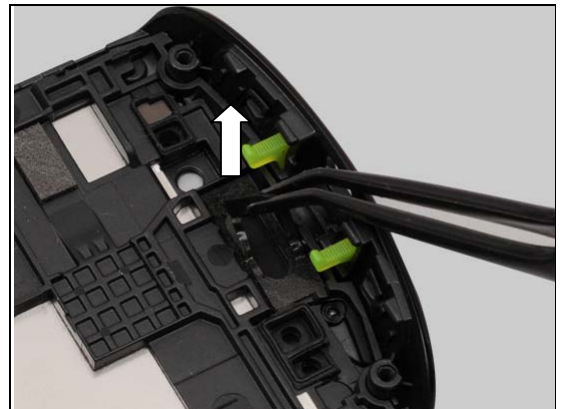
REMOVAL

Detach to remove the Ear Speaker by using Front Opening Tool.



Detach to remove the Gasket Receiver by using a Flex Film Assembly Tool.

Make sure all remains have been removed!



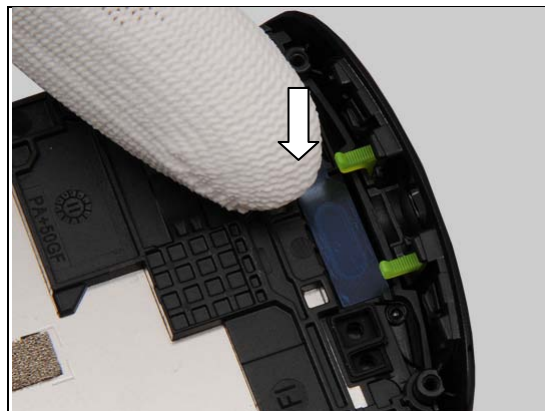
INSTALLATION

Place a new Gasket Receiver in the cavity.

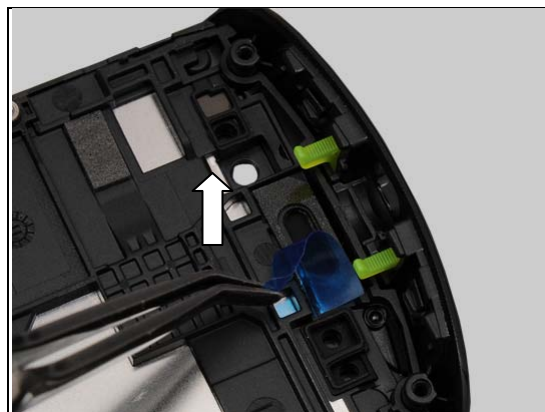


Replacement: Ear Speaker and Gasket Receiver

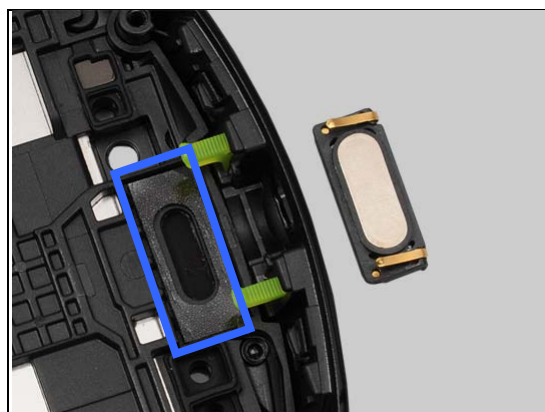
Press to secure its attachment.



Peel off the protective film.

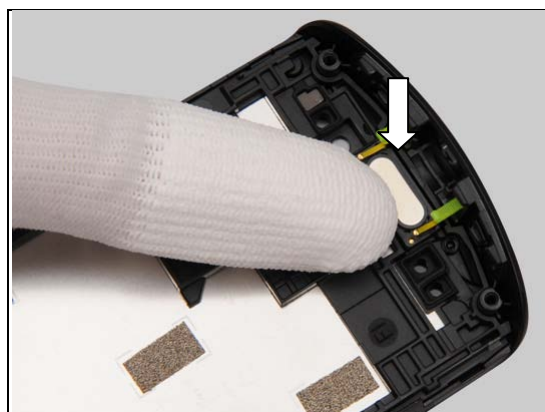


Place a new Ear Speaker into the cavity as shown.



Press to secure its attachment.

Do not touch the contact pins!



Replacement

4.17 Front Cover

Follow the 3.1 – 3.5 Disassembly instructions!

Prepare a new Front Cover.

Follow the 4.20 Installation instructions!

Follow the 5.3 – 5.7 Reassembly instructions!



Replacement

4.18 Gasket Camera

Follow the 3.1 – 3.3 Disassembly instructions!

Carry out the Removal as described below.

Prepare a new Gasket Camera.

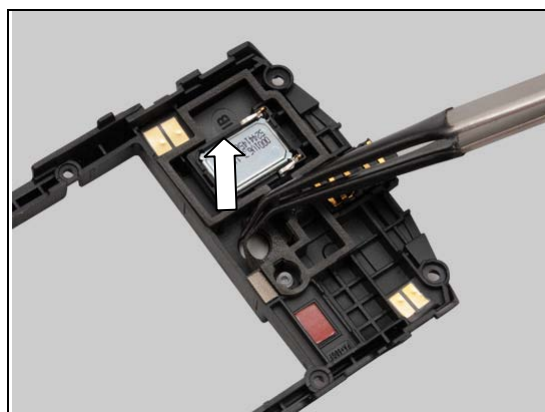
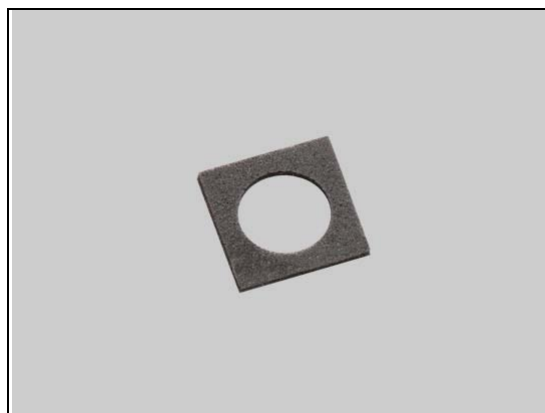
Carry out the Installation as described below.

Follow the 5.5 – 5.7 Reassembly instructions!

REMOVAL

Detach to remove the Gasket Camera by using a Flex Film Assembly Tool.

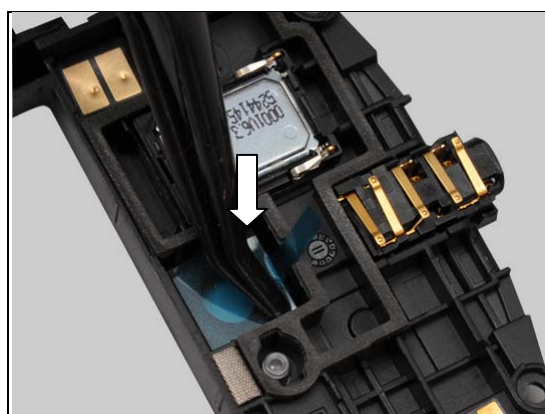
Make sure all remains have been removed!



INSTALLATION

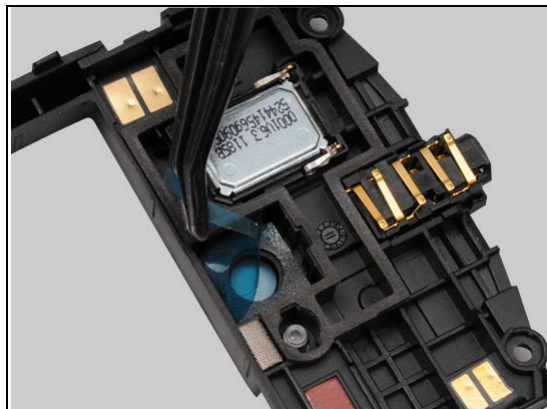
Place a new Gasket Camera in the cavity.

Press to secure its attachment.



Replacement: Gasket Camera

Peel off the protective film.



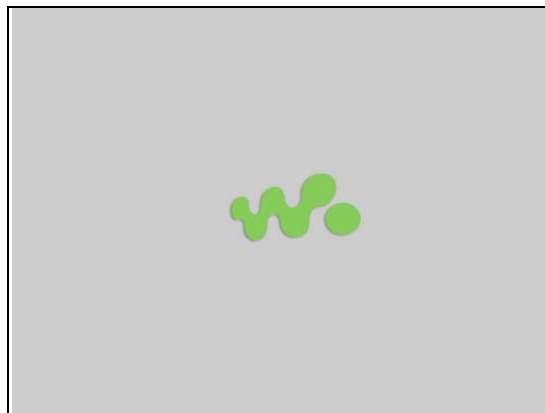
Replacement

4.19 Icon Walkman Logo

Carry out the Removal as described below.
Prepare a new Icon Walkman Logo.
Carry out the Installation as described below.

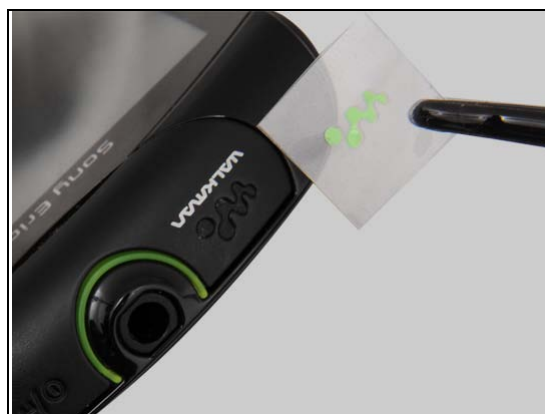
REMOVAL

Gently detach to remove the Icon Walkman Logo.



INSTALLATION

Place a new Icon Walkman Logo.



Press to secure its attachment.



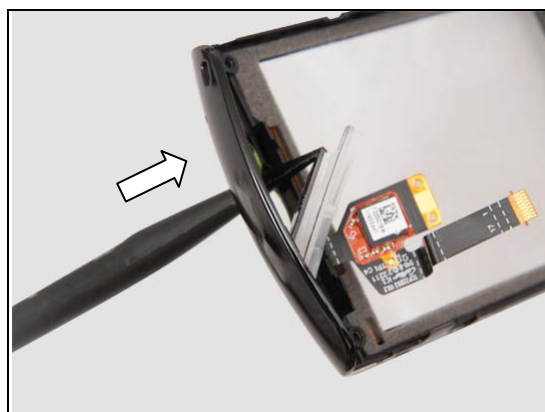
Replacement

4.20 Key Home

Follow the 3.1 – 3.5 Disassembly instructions!
 Carry out the Removal as described below.
 Prepare a new Key Home.
 Carry out the Installation as described below.
Follow the 5.3 – 5.7 Reassembly instructions!

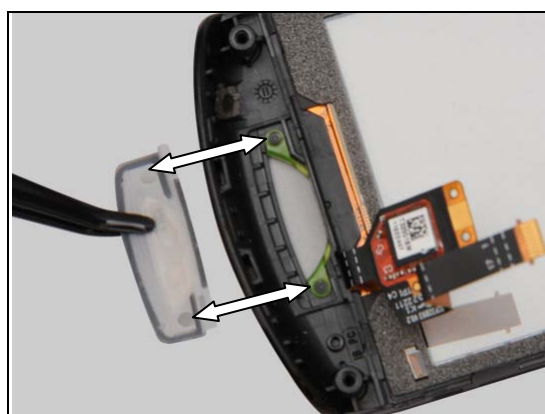
REMOVAL

Push against the Key Home from the outside of the Front Cover with a Nylon Pointer.

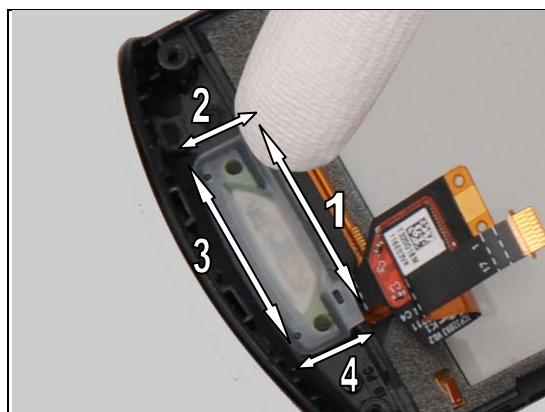


INSTALLATION

Place a new Key Home aligning to the guiding pins as shown.



Press along the side of the Key Home following the order to secure its attachment as shown.



Replacement

4.21 Key Side

Follow the 3.1 Disassembly instructions!

Carry out the Removal as described below.

Prepare a new Key Side.

Carry out the Installation as described below.

Follow the 5.7 Reassembly instructions!

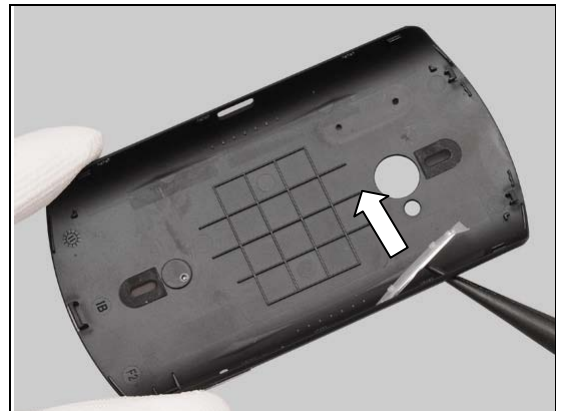
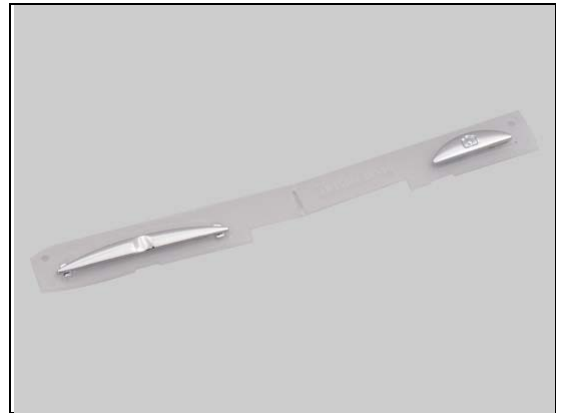
REMOVAL

Gently push against the Key Side from the outside of the Front Cover by using a Nylon Pointer.

Remove the Key Side by using a Flex Film Assembly Tool.

INSTALLATION

Place a new Key Side aligning to the three guiding pins and guiding poles of the Battery Cover.



Replacement: Key Side

Press along to secure its attachment.





Replacement

4.22 Label For RF Connector

Follow the 3.1 – 3.2 Disassembly instructions!
Carry out the Removal as described below.
Prepare a new Label For RF Connector.
Carry out the Installation as described below.
Follow the 5.6 – 5.7 Reassembly instructions!

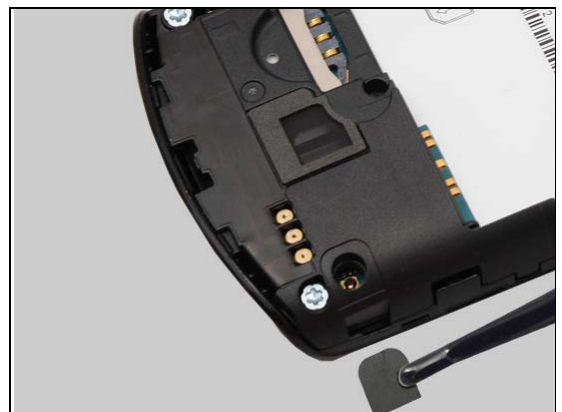
REMOVAL

Release the Label For RF Connector from corner by using Flex Film Assembly Tool.



INSTALLATION

Place a new Label For RF Connector in the correct position as shown.



Press to secure its attachment.





Replacement

4.23 Loudspeaker and Gasket Speaker

Follow the 3.1 – 3.3 Disassembly instructions!

Carry out the Removal as described below.

Prepare a new Loudspeaker and a new Gasket Speaker.

Carry out the Installation as described below.

Follow the 5.5 – 5.7 Reassembly instructions!



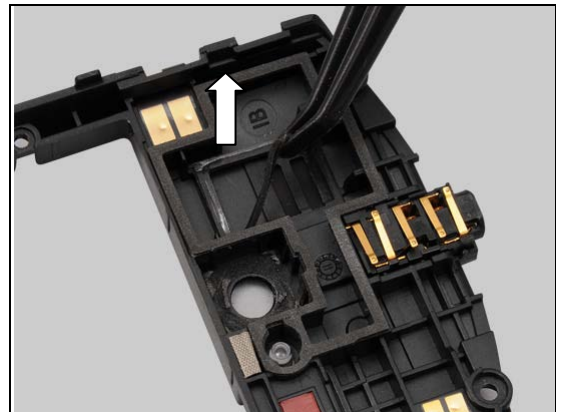
4.23.1 Upper Loudspeaker

REMOVAL

Insert the Front Opening Tool underneath and lift up to remove the Upper Loudspeaker as shown.

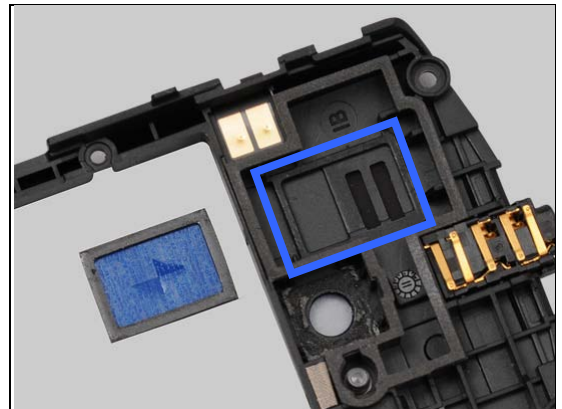


Detach to remove the Gasket Speaker.



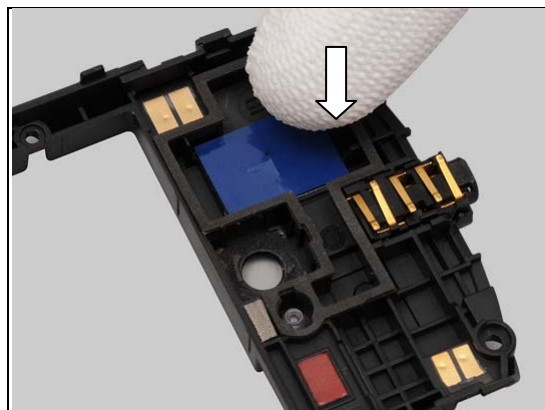
INSTALLATION

Place a new Gasket Speaker in the cavity as shown.

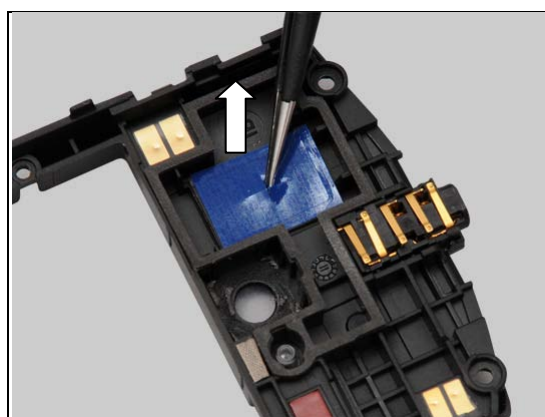


Replacement: Loudspeaker and Gasket Speaker

Press along the edge to secure its attachment.

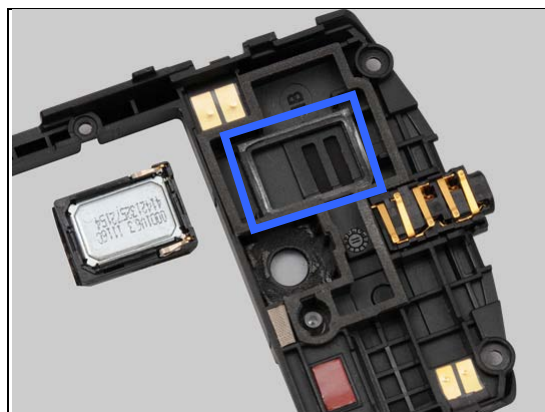


Remove the protective film.



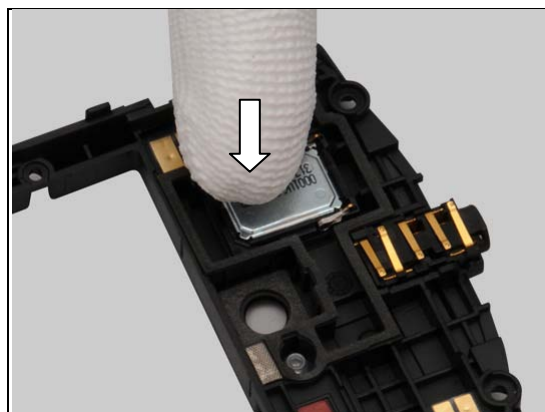
Place a new Upper Loudspeaker into the cavity with correct direction as shown.

Pay attention to the direction of Loudspeaker!



Press to secure its attachment.

Do not touch the contact pins!



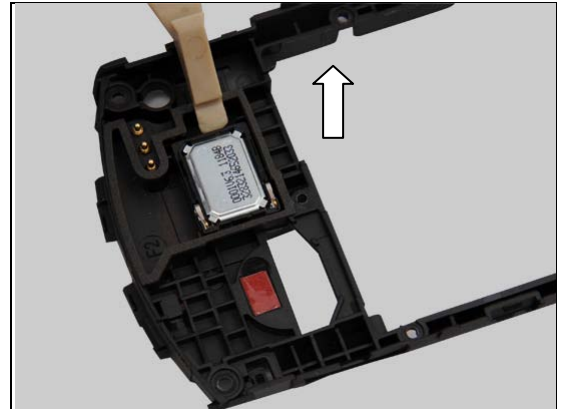


Replacement: Loudspeaker and Gasket Speaker

4.23.2 Lower Loudspeaker

REMOVAL

Insert the Front Opening Tool underneath and lift up to remove the Upper Loudspeaker as shown.

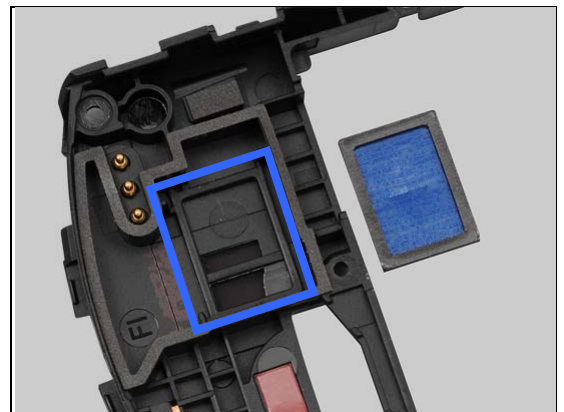


Detach to remove the Gasket Speaker.



INSTALLATION

Place a new Gasket Speaker in the cavity.

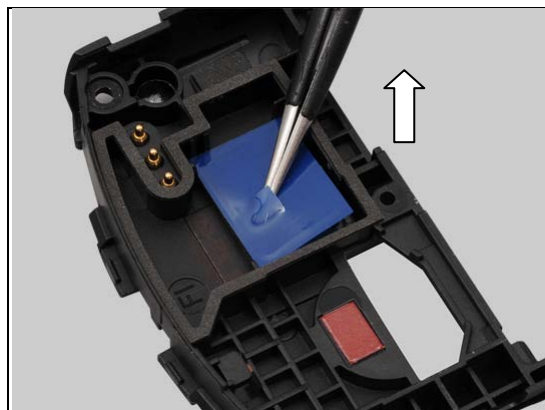


Press along the edge to secure its attachment.



Replacement: Loudspeaker and Gasket Speaker

Remove the protective film.



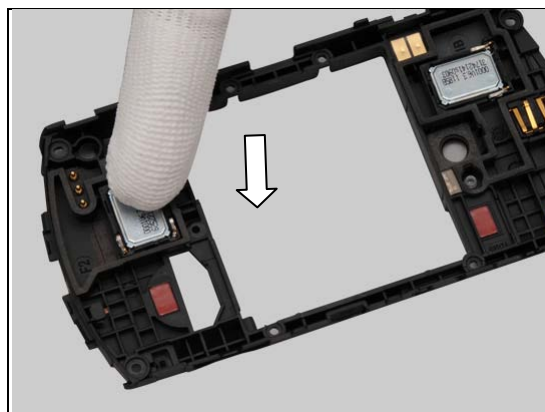
Place a new Lower Loudspeaker into the cavity with correct direction as shown.

Pay attention to the direction of Loudspeaker!



Press to secure its attachment.

Do not touch the contact pins!



Replacement

4.24 Net Microphone

Follow the 3.1 – 3.5 Disassembly instructions!

Carry out the Removal as described below.

Prepare a new Net Microphone.

Carry out the Installation as described below.

Follow the 5.3 – 5.7 Reassembly instructions!

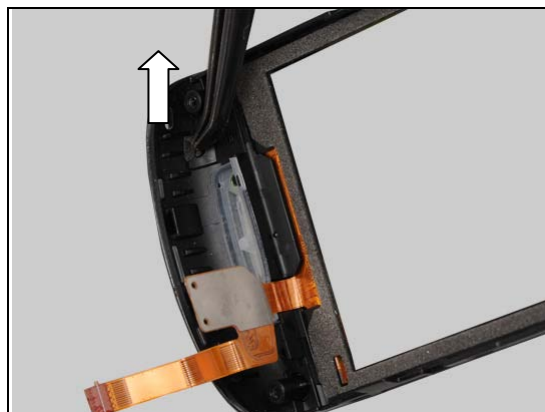
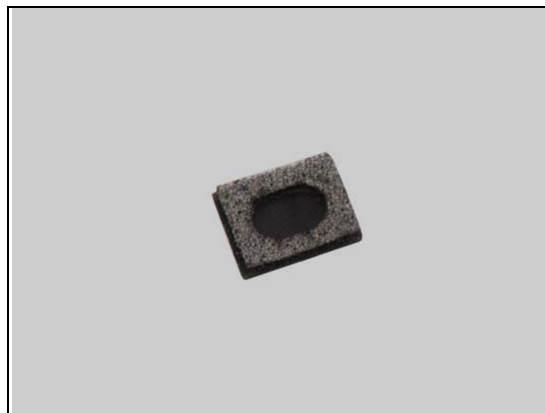
REMOVAL

Detach to remove the Net Microphone.

INSTALLATION

Place a new Net Microphone.

Press to secure its attachment.



Replacement

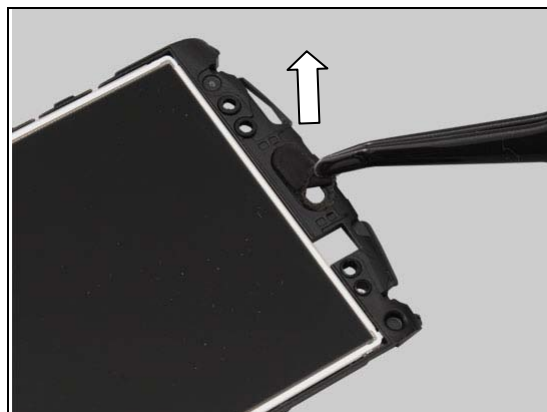
4.25 Net Receiver

Follow the 3.1 – 3.5 Disassembly instructions!
 Carry out the Removal as described below.
 Prepare a new Net Receiver.
 Carry out the Installation as described below.
Follow the 5.3 – 5.7 Reassembly instructions!

REMOVAL

Detach to remove the Net Receiver.

Make sure all remains have been removed!



INSTALLATION

Prepare a new Net Receiver.



Press to secure its attachment.



Replacement

4.26 Rear Cover

Follow the 3.1 – 3.3 Disassembly instructions!

Follow the 4.22 Removal instructions!

Prepare a new Rear Cover.

Follow the 4.22 Installation instructions!

Follow the 5.5 – 5.7 Reassembly instructions!





Replacement

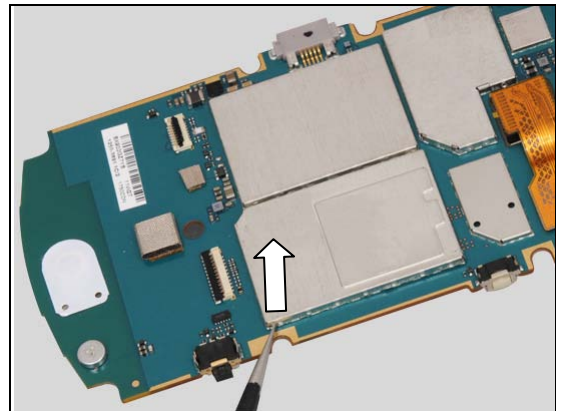
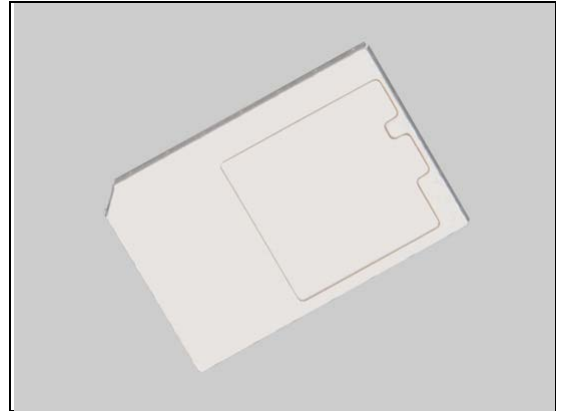
4.27 Shield Can Lid DBB

Follow the 3.1 – 3.4 Disassembly instructions!
Carry out the Removal as described below.
Prepare a new Shield Can Lid DBB.
Carry out the Installation as described below.
Follow the 5.4 – 5.7 Reassembly instructions!

REMOVAL

Unsnap the corners of the Shield Can Lid DBB by using a pair of Tweezers and pull upwards to remove it.

Scrap! Not to be reused!

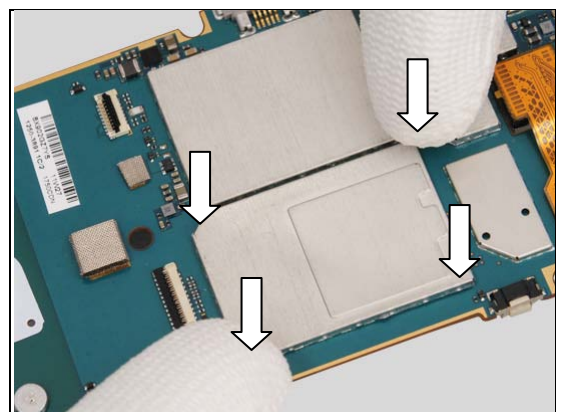
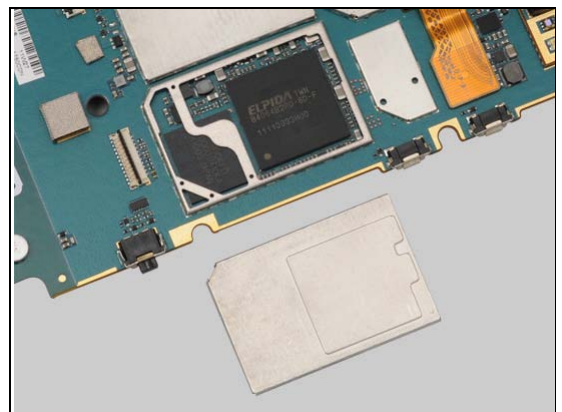


INSTALLATION

Prepare a new Shield Can Lid DBB.

Press to snap it.

Only the edge of the Shield Can is allowed to press.





Replacement

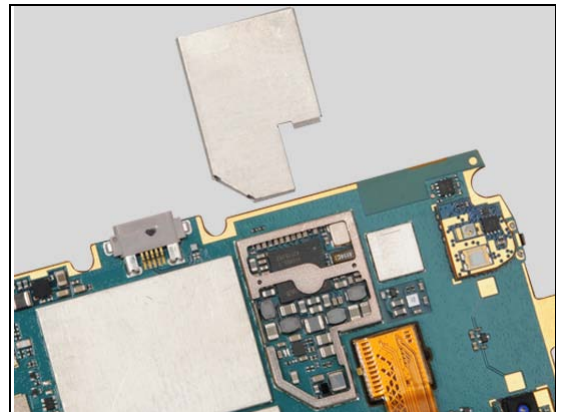
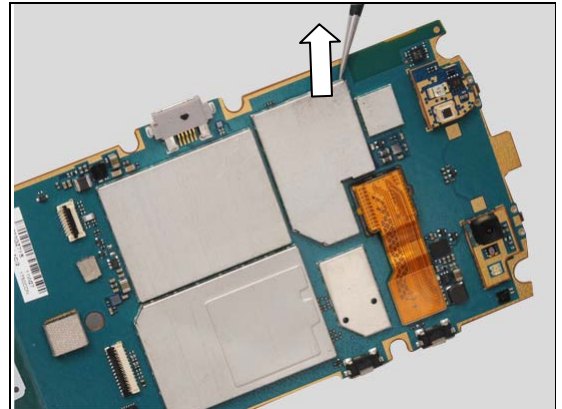
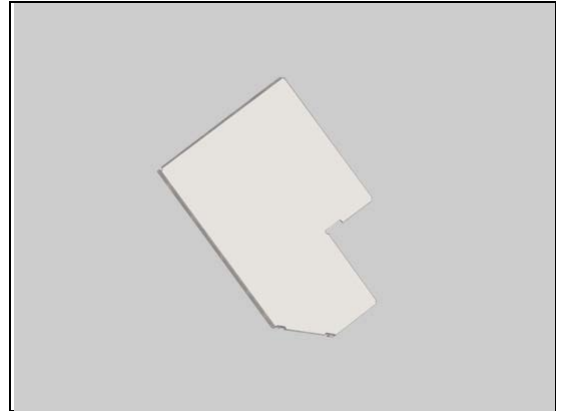
4.28 Shield Can Lid PMU

Follow the 3.1 – 3.4 Disassembly instructions!
Carry out the Removal as described below.
Prepare a Shield Can Lid PMU.
Carry out the Installation as described below.
Follow the 5.4 – 5.7 Reassembly instructions!

REMOVAL

Unsnap the corners of the Shield Can Lid PMU by using a pair of Tweezers and pull upwards to remove it.

Scrap! Not to be reused!

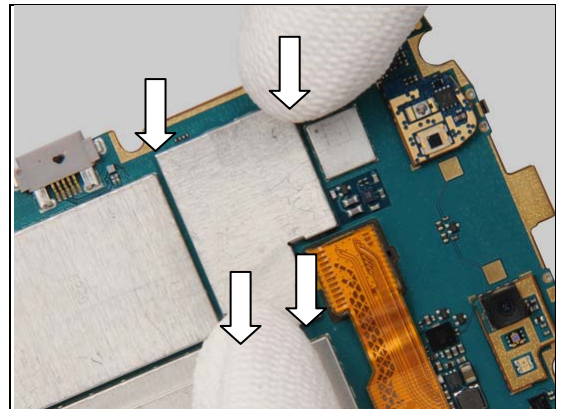


INSTALLATION

Prepare a new Shield Can Lid PMU.

Press to snap it.

Only the edge of the Shield Can is allowed to press.





Replacement

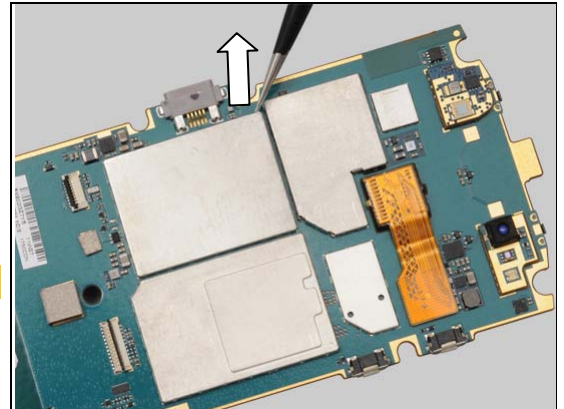
4.29 Shield Can Lid RF

Follow the 3.1 – 3.4 Disassembly instructions!
Carry out the Removal as described below.
Prepare a new Shield Can Lid RF.
Carry out the Installation as described below.
Follow the 5.4 – 5.7 Reassembly instructions!

REMOVAL

Unsnap the corners of the Shield Can Lid RF by using a pair of Tweezers and pull upwards to remove it.

Scrap! Not to be reused!

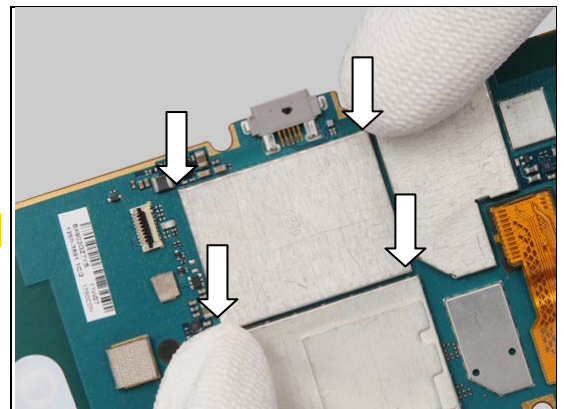
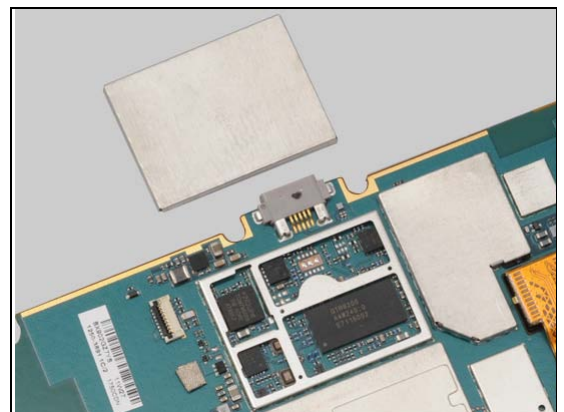


INSTALLATION

Prepare a new Shield Can Lid RF.

Press to snap it.

Only the edge of the Shield Can is allowed to press.



Replacement

4.30 Water Indicator

INSPECTION

Check whether the Water Indicator has been activated (reddish color).

There are two Water Indicators.

Do the same to the other if need!

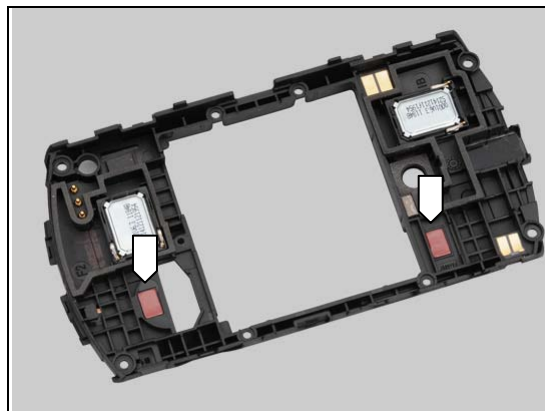
Follow the 3.1 – 3.3 Disassembly instructions!

Carry out the Removal as described below.

Prepare the new Water Indicator.

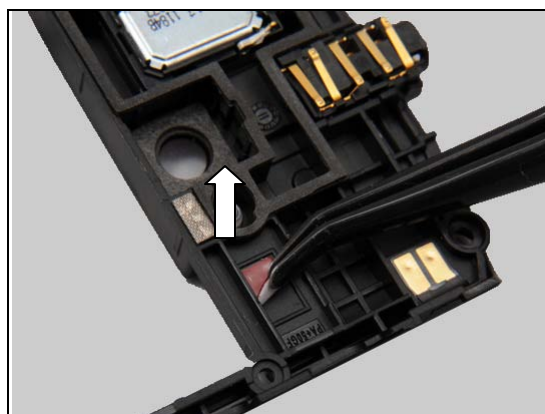
Carry out the Installation as described below.

Follow the 5.5 – 5.7 Reassembly instructions!



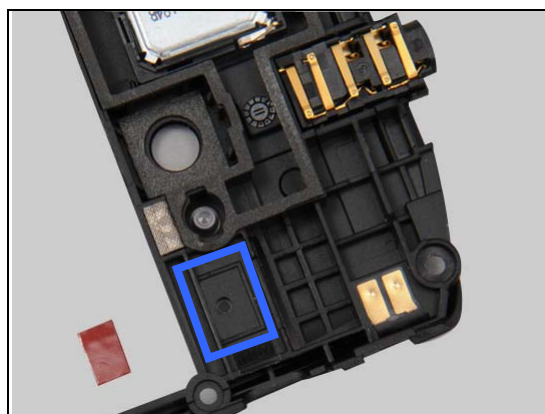
REMOVAL

Detach to remove the Water Indicator.



INSTALLATION

Place a new Water Indicator aligning to the guiding line.



Press to secure its attachment.



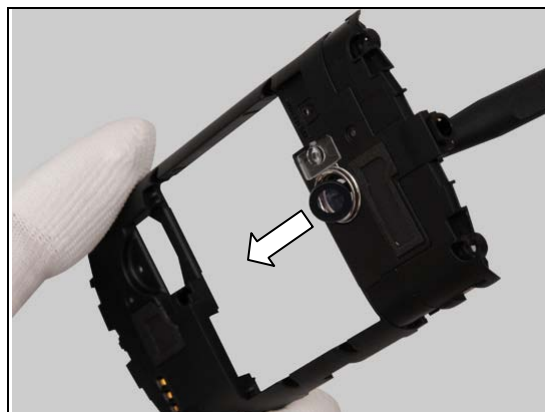
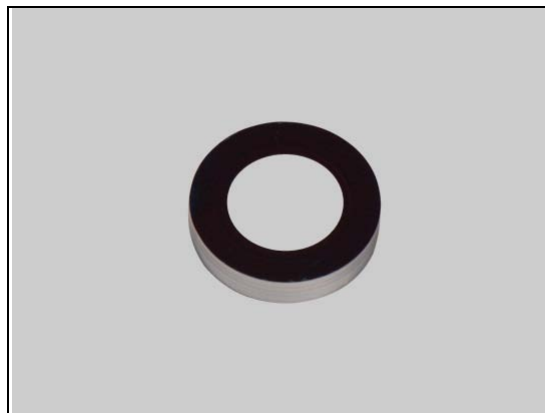
Replacement

4.31 Window Camera

Follow the 3.1 – 3.3 Disassembly instructions!
 Carry out the Removal as described below.
 Prepare a new Window Camera.
 Carry out the Installation as described below.
Follow the 5.5 – 5.7 Reassembly instructions!

REMOVAL

Push against the Window Camera from the back side with a Nylon Pointer.



INSTALLATION

Check the stickiness of the adhesive before installation!

Place a new Window Camera in the cavity.



Press to secure its attachment.



Replacement

4.32 Window Flash LED

Follow the 3.1 – 3.3 Disassembly instructions!
 Carry out the Removal as described below.
 Prepare the new Window Flash LED.
 Carry out the Installation as described below.
Follow the 5.5 – 5.7 Reassembly instructions!

REMOVAL

Push against the Window Flash LED from the back side with a Nylon Pointer.



INSTALLATION

Check the stickiness of the adhesive before installation!

Place a new Window Flash LED in the cavity as shown.



Press to secure its attachment.





Replacement

4.33 Board Swap - Replacement

Follow the 3.1 – 3.4 Disassembly instructions!

Replace the Swap Board.

Reuse the Camera.

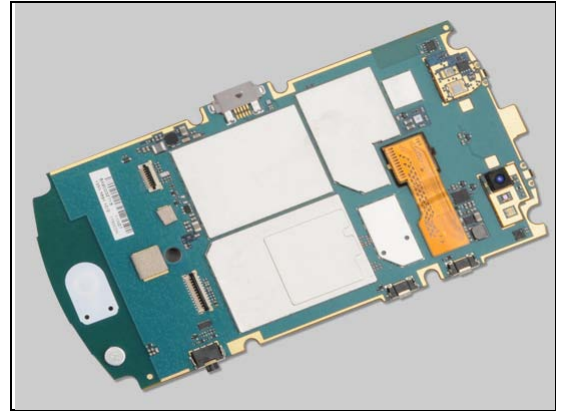
Follow the 4.7, 4.12, 4.13, 4.14, and 4.16 Installation instructions!

Follow the 5.4 – 5.5 Reassembly instructions!

Follow the 4.11 Installation instructions!

Follow the 5.6 – 5.7 Reassembly instructions!

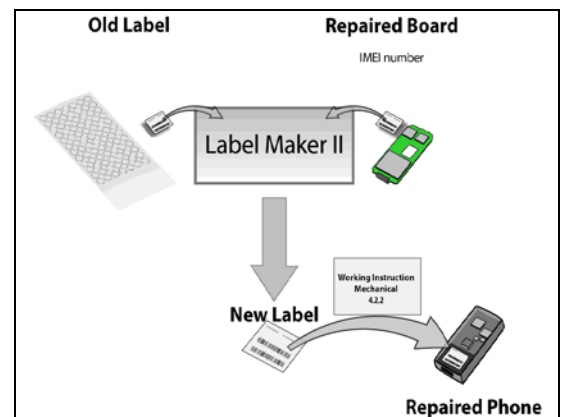
NOTE: Startup the unit to initialize settings, before perform Customize Phone in Emma



4.34 Board Swap – Change Label

CHANGE LABEL

Follow the instructions in the Generic Repair Manual – Build swap for change of label.

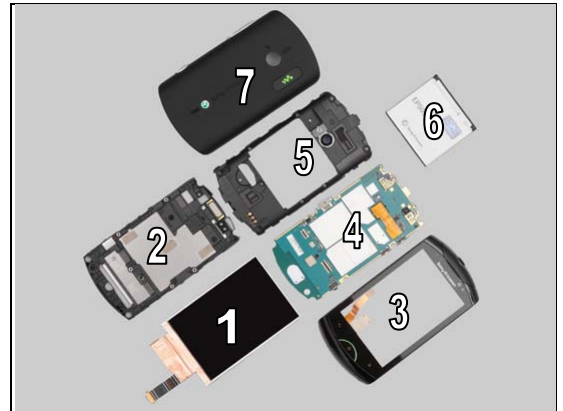




5 Reassembly

The reassembly is done in the following order:

1. Display
2. Carrier Frame Assy
3. Front Cover Assy
4. Main PBA
5. Rear Cover
6. Battery
7. Battery Cover Assy



5.1 Display

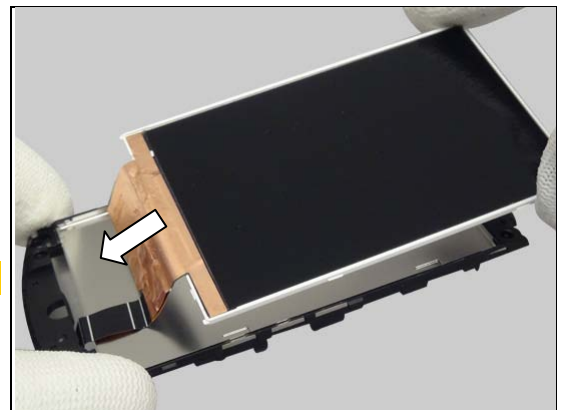
Prepare the Display and the Carrier Frame Assy.



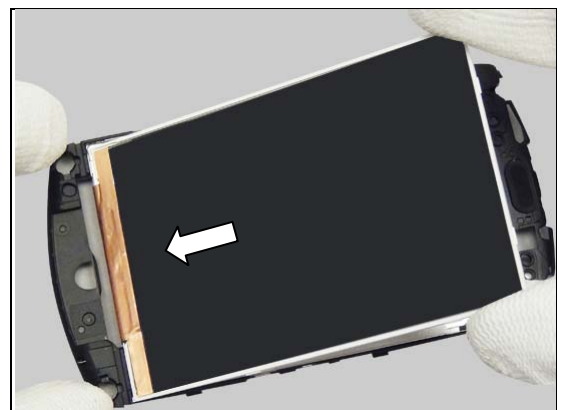
5.2 Carrier Frame Assy

Gently insert the LCD FPC through the slot of the Carrier Frame Assy.

Do not touch the front of the Display!

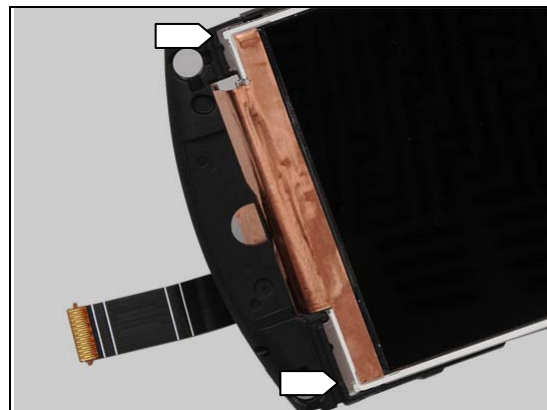


Place the display onto the Carrier Frame Assy.

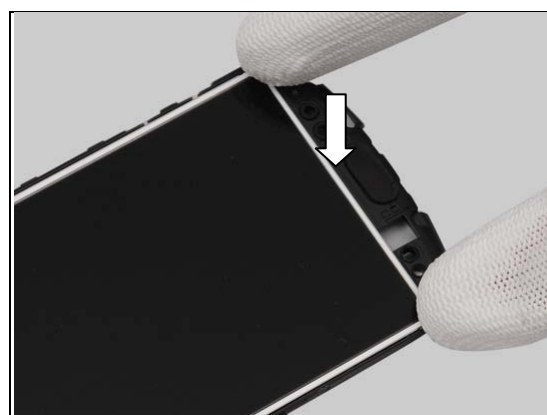


Reassembly

Insert the two hooks into the slots of Carrier Frame Assy.



Press to snap the other two hooks.



5.3 Front Cover

Prepare the Front Cover and Carrier Frame Assy.

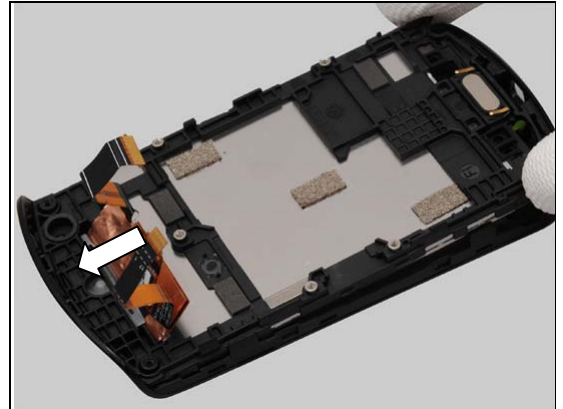


Gently insert the Touch Panel FPC through the slot of the Carrier Frame Assy.



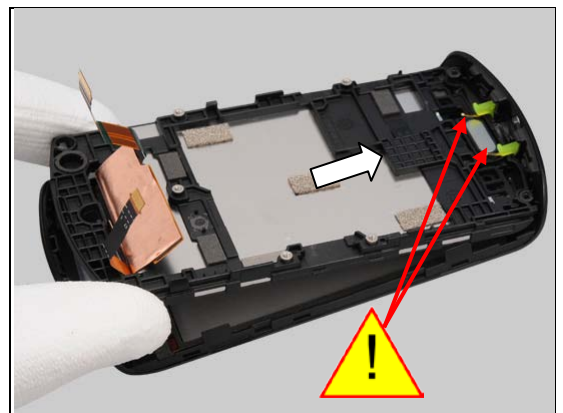
Reassembly

Securely place the top of the Carrier Frame Assy on the Front Cover.



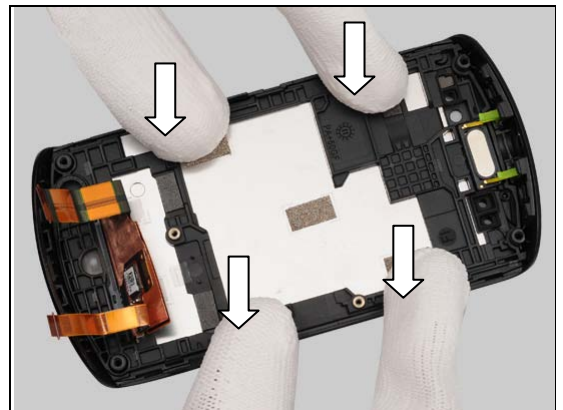
Insert the two hooks to snap the front cover.

Be careful of the two pins as marked!



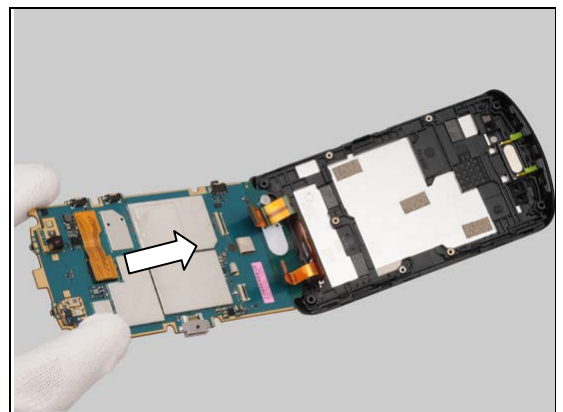
Press the Carrier Frame Assy to snap the hooks on both sides.

Make sure the FPC is fully draw out!



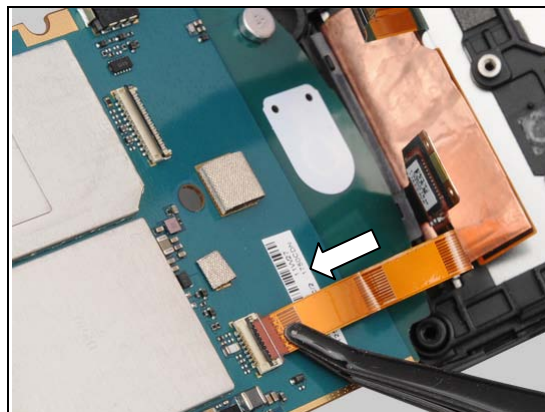
5.4 Main PBA

Place the Main PBA and the front unit as shown.

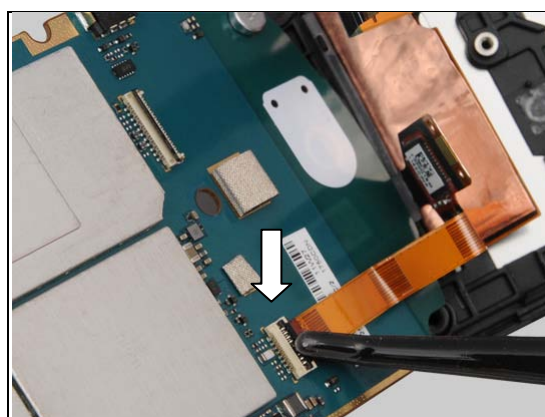


Reassembly

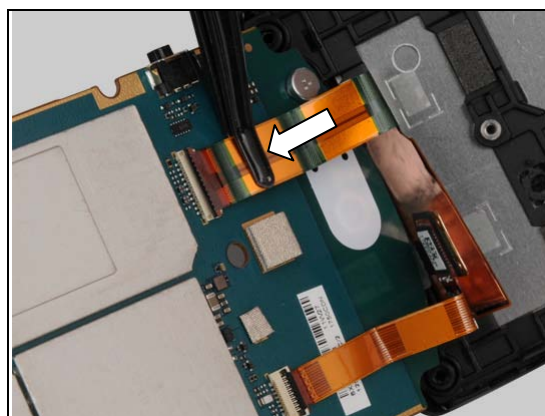
Insert the Touch Panel FPC into the ZIF Connector by using a Flex Film Assembly Tool.



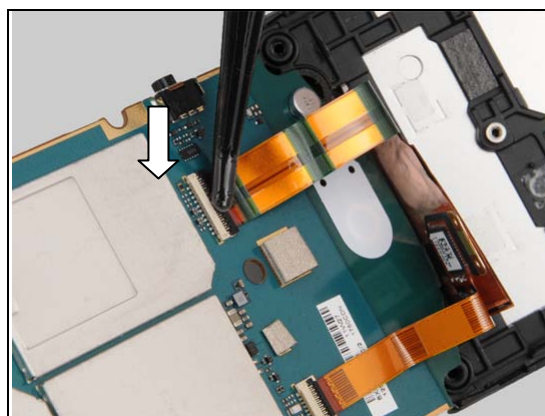
Lock the ZIF connector.



Insert the LCD FPC into the ZIF Connector by using a Flex Film Assembly Tool.

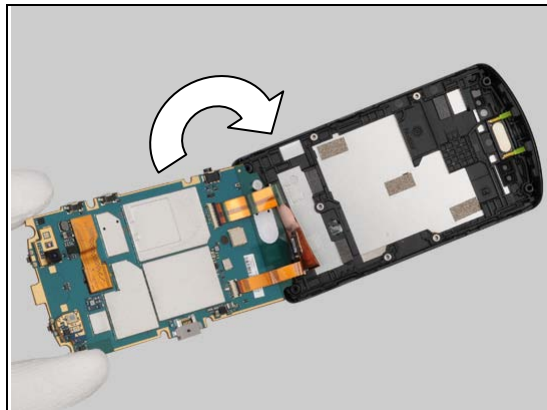


Lock it.

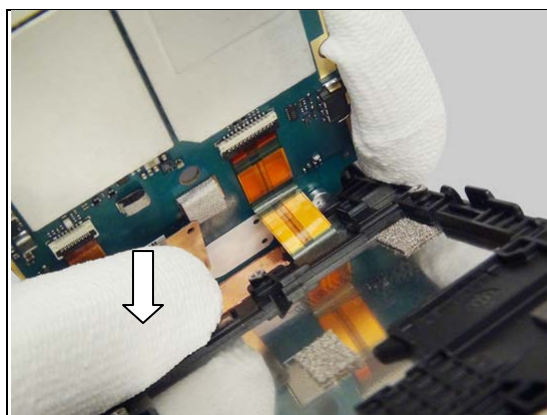


Reassembly

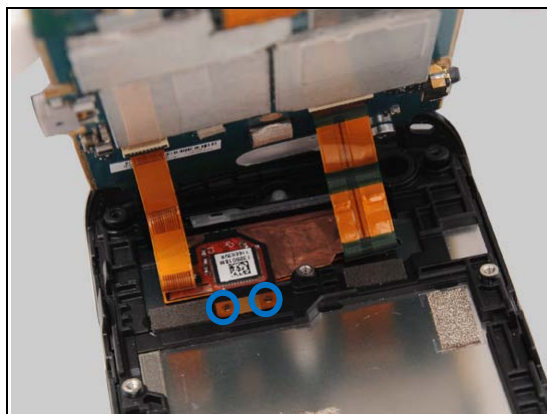
Turn the Main PBA over.



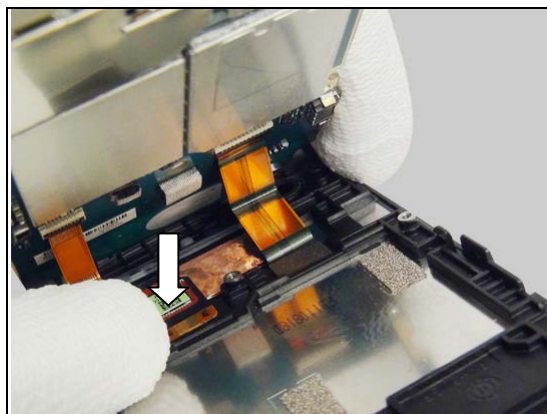
Press the LCD FPC to secure its attachment.



Attach the Touch Panel FPC aligning the two guiding pins as shown.



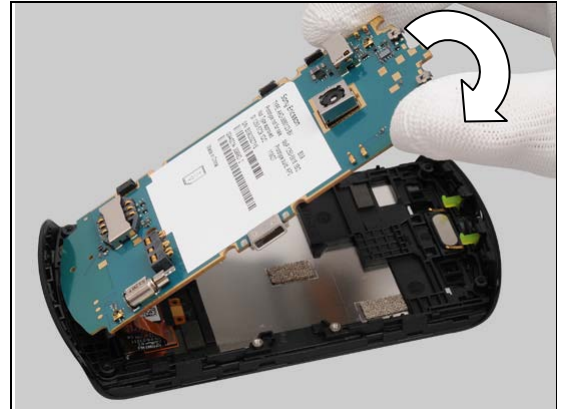
Press to secure its attachment.





Reassembly

Turn the Main PBA over onto the unit.



Insert the top side to Main PBA at approximately 30° as shown in the picture.



Press along to snap the Main PBA.

Do not touch the components on the Main PBA!



5.5 Rear Cover

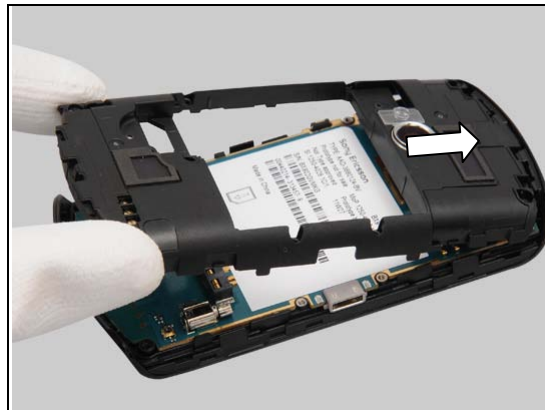
Prepare the Rear Cover.



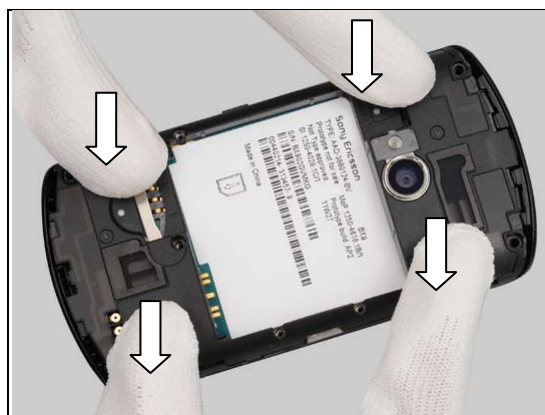
Reassembly

Push the Rear Cover into the Front Cover to snap the hooks on the top side.

Make sure Audio Jack is inserted!



Press to snap the hooks on these two sides as shown.



Press to snap the hooks on the bottom side as shown.



Do the same of the top side.



Reassembly

Apply 10 Ncm torque when tightening the five screws with Bits (JCIS No 0).



Apply 18 Ncm torque when tightening the four screws with Bits (T6).



5.6 Battery

Insert the Battery into its socket.



Press the bottom of the Battery to secure its position.





Reassembly

5.7 Battery Cover Assy

Place the Battery Cover Assy on its proper position as shown.



Press to snap the Battery Cover Assy.



Press to snap the hooks on the top side as shown.



Do the same for the bottom side.





6 Country of Origin Barcodes for Brazil/VIVO Labels

Below is a link to a list of countries of origin. If you are printing a Brazil or VIVO label, scan the barcode corresponding to the correct country of origin for the “Fabricado” field.





7 Revision History

Rev.	Date	Changes/Comments
1	2011-Sep-26	Initial release
2	2011-Sep-26	Update Rear Cover chapter
3	2011-Oct-11	Add Brazil/VIVO Barcode chapter
4	2012-Jul-25	Update the chapter 4.33